

# Mouse Prolactin protein (active)

**Cat. No. GTX67140-pro**

<b>Applications</b>	Functional Assay
<b>Species</b>	Mouse

**Package**  
5 µg

## Applications

### Application Note

Measured in a cell proliferation assay using Nb2-11 Rat lymphoma cells. The ED<sub>50</sub> for this effect is less or equal to 3 ng/ml.

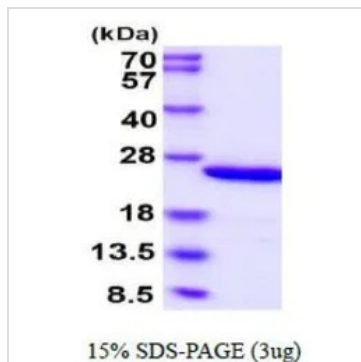
## Properties

<b>Form</b>	Liquid
<b>Buffer</b>	PBS
<b>Preservative</b>	No preservatives
<b>Storage</b>	Store as concentrated solution. Centrifuge briefly prior to opening vial. For short-term storage (1-2 weeks), store at 4°C. For long-term storage, aliquot and store at -20°C or below. Avoid multiple freeze-thaw cycles.
<b>Concentration</b>	1 mg/ml (Please refer to the vial label for the specific concentration.)
<b>Region/Sequence</b>	Length: 200 a.a. Sequence: MQPLPICSAG DCQTSRLREL DRVILSHYI HTLYTDMFIE FDKQYVQDRE FMVKVINDCP TSSLATPEDK EQALKVPPEV LLNLILSLVQ SSSDPLFQLI TGVGGIQEAP EYILSRAKEI EEQNKQLLEG VEKIIISQAYP EAKGNGIYFV WSQPLSLQGV DEESKILSLR NTIRCLRRDS HKVDNFKVL RCQIAHQNNC
<b>Expression System</b>	E. coli
<b>Purity</b>	> 90% by SDS-PAGE.
<b>Endotoxin</b>	< 1.0 EU/µg (determined by LAL method)
<b>Conjugation</b>	Unconjugated
<b>Note</b>	For In vitro laboratory use only. Not for any clinical, therapeutic, or diagnostic use in humans or animals. Not for animal or human consumption.



For full product information, images and publications, please visit our [website](#).

## DATA IMAGES



### GTX67140-pro Image

3  $\mu$ g of GTX67140-pro Mouse Prolactin protein (active) by SDS-PAGE under reducing condition and visualized by coomassie blue stain



For full product information, images and publications, please visit our [website](https://www.genetex.com).