

Human PRX II protein (active)

Cat. No. GTX67144-pro**Applications** Functional Assay**Species** Human**Package**

100 µg

Applications

Application Note

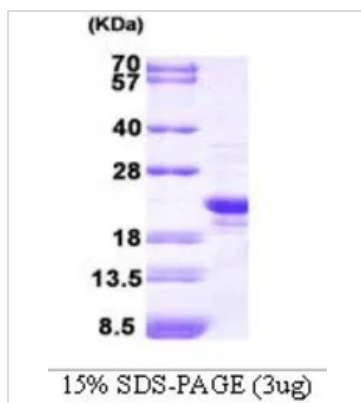
Specific activity is > 2000 pmol/min/µg. Enzymatic activity is defined as the amount of hydroperoxide that 1µg of enzyme can reduce at 25°C for minute.

Properties

Form Liquid**Buffer** 20mM Tris-HCl, 10% Glycerol**Preservative** No preservatives**Storage** Store as concentrated solution. Centrifuge briefly prior to opening vial. For short-term storage (1-2 weeks), store at 4°C. For long-term storage, aliquot and store at -20°C or below. Avoid multiple freeze-thaw cycles.**Concentration** 1 mg/ml (Please refer to the vial label for the specific concentration.)**Region/Sequence** Full length protein, Length: 198 a.a. Sequence: MASGNARIGK PAPDFKATAV VDGAfKEVKL SDYKGKYVWL FFYPLDFTFV CPTEIIAFSN RAEDFRKLGK EVLGVSVD SQ FTHLAWINTP RKEGGLGPLN IPLLADVTRR LSEDYGV LKT DEGIAYRGLF IIDGKGVL RQ ITVNDLPVGR SVDEALRLVQ AFQYTDEHGE VCPAGWKPGS DTIKPNVDDS KEYFSKHN**Expression System** E. coli**Purity** > 90% by SDS-PAGE.**Conjugation** Unconjugated**Note** For In vitro laboratory use only. Not for any clinical, therapeutic, or diagnostic use in humans or animals. Not for animal or human consumption.

For full product information, images and publications, please visit our [website](#).

DATA IMAGES



GTX67144-pro Image

3 μ g of GTX67144-pro Human PRX II protein (active) by SDS-PAGE under reducing condition and visualized by coomassie blue stain



For full product information, images and publications, please visit our [website](#).