

Human Purine nucleoside phosphorylase protein, His tag (active)

Cat. No. GTX67149-pro

Application Functional Assay**Species** Human**Package**

100 µg

APPLICATION

Application Note

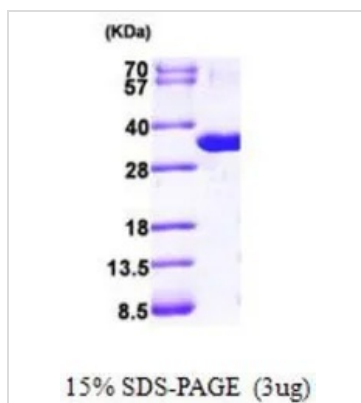
Specific activity is > 120 units/mg, and is defined as the amount of enzyme that phosphorolysis of 1.0 µmole of inosine with inorganic phosphate per minute at pH 7.5 at 25°C.

PROPERTIES

Form Liquid**Buffer** 20mM Tris-HCl, 100mM NaCl, 10% Glycerol, 2mM DTT**Preservative** No preservative**Storage** Store as concentrated solution. Centrifuge briefly prior to opening vial. For short-term storage (1-2 weeks), store at 4°C. For long-term storage, aliquot and store at -20°C or below. Avoid multiple freeze-thaw cycles.**Concentration** 1 mg/ml (Please refer to the vial label for the specific concentration.)**Region/Sequence** Full length protein, N-terminal His-Tag; Length: 309 a.a. Sequence: MGSSHHHHHH SSGLVPRGSH MENGTYEDY KNTAEWLLSH TKHRPQVAII CGSGLGGLTD KLTQAQIFDY GEIPNFPRST VPGHAGRLVF GFLNGRACVM MQGRFHMIEG YPLWKVTFPV RVFHLGVDLT LVTNAAGGL NPKFEVGDIM LIRDHINLPG FSGQNPLRGP NDERFGDRFP AMSDAYDRTM RQRALSTWKQ MGEQRELQEG TYVMVAGPSF ETVAECRLVQ KLGADAVGMS TVPEVIVARH CGLRVFGFSL ITNKVIMDYE SLEKANHEEV LAAGKQAAQK LEQFVSILMA SIPLPKAS**Expression System** E. coli**Purity** > 90% by SDS-PAGE.**Conjugation** Unconjugated**Note** For In vitro laboratory use only. Not for any clinical, therapeutic, or diagnostic use in humans or animals. Not for animal or human consumption.

For full product information, images and publications, please visit our [website](#).

DATA IMAGES



GTX67149-pro Image

3 μ g of GTX67149-pro Human Purine nucleoside phosphorylase protein (active) by SDS-PAGE under reducing condition and visualized by coomassie blue stain



For full product information, images and publications, please visit our [website](https://www.genetex.com).