

Mouse SCF protein (active)

Cat. No. GTX67153-pro

Applications Functional Assay

Species Mouse

Package

5 µg

Applications

Application Note

Measured in a cell proliferation assay using MC/9 mouse mast cells. The ED₅₀ for this effect is less or equal to 20 ng/ml.

Properties

Form Liquid

Buffer PBS, 10% Glycerol

Preservative No preservatives

Storage Store as concentrated solution. Centrifuge briefly prior to opening vial. For short-term storage (1-2 weeks), store at 4°C. For long-term storage, aliquot and store at -20°C or below. Avoid multiple freeze-thaw cycles.

Concentration 1 mg/ml (Please refer to the vial label for the specific concentration.)

Region/Sequence Length: 165 a.a. Sequence: MKEICGNPVT DNVKDITKLV ANLPNDYMIT LNYVAGMDVL PSHCWLRDMV IQLSLSLTTL LDKFSNISEG LSNYSIIDKL GKIVDDLVC MEENAPKNIK ESPKRPETRS FTPEEFSIF NRSIDAFKDF MVASDTSDCV LSSTLGPEKD SRVSVTKPFM LPPVA

Expression System E. coli

Purity > 95% by SDS-PAGE.

Endotoxin < 1.0 EU/µg (determined by LAL method)

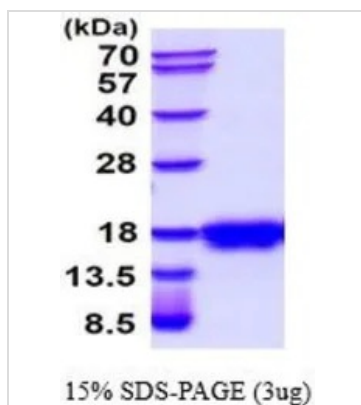
Conjugation Unconjugated

Note For In vitro laboratory use only. Not for any clinical, therapeutic, or diagnostic use in humans or animals. Not for animal or human consumption.



For full product information, images and publications, please visit our [website](#).

DATA IMAGES



GTX67153-pro Image

3 μ g of GTX67153-pro Mouse SCF protein (active) by SDS-PAGE under reducing condition and visualized by coomassie blue stain



For full product information, images and publications, please visit our [website](#).