

Human SHP1 protein

Cat. No. GTX67154-pro

Applications	Functional Assay
Species	Human

Package
100 µg

Applications

Application Note

> 5000 units/mg of SHP-1.

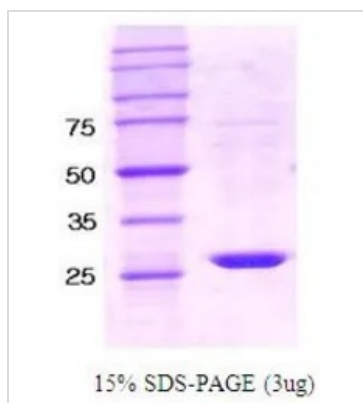
Properties

Form	Liquid
Buffer	25mM Tris-HCl, 20% Glycerol, 2mM beta-mercaptoethanol, 1mM DTT, 1mM EDTA
Preservative	No preservatives
Storage	Store as concentrated solution. Centrifuge briefly prior to opening vial. For short-term storage (1-2 weeks), store at 4°C. For long-term storage, aliquot and store at -20°C or below. Avoid multiple freeze-thaw cycles.
Concentration	1 mg/ml (Please refer to the vial label for the specific concentration.)
Region/Sequence	Length: 300 a.a. Sequence: MGFWEEFESL QKQEVKNLHQ RLEGQRPE NK GKNRYKNILP FDHSRVILQG RDSNIPGSDY INANYIKNQL LGPDENAKTY IASQGCLEAT VNDFWQMAWQ ENSRVIVMTT REVEKGRNKC VPYWPEVGMQ RAYGPYSVTN CGEHD TTEYK LRTLQVSP LD NGDLIREIWH YQYLSWPDHG VPSEPGGVLS FLDQINQRQE SLPHAGPIIV HCSAGIGRTG TIIVIDMLME NISTKGLDCD IDIQKTIQMV RAQRSGMVQT EAQYKFIYVA IAQFIETTKK KLEVLQSQKG QESEYGNITY
Expression System	E. coli
Purification	purified by FPLC gel-filtration chromatography, after refolding of the isolated inclusion bodies in a redox buffer. Additional amino acid (Methionine) is attached at N-terminus.
Purity	> 95% by SDS-PAGE.
Endotoxin	< 1.0 EU/µg (determined by LAL method)
Conjugation	Unconjugated
Note	For In vitro laboratory use only. Not for any clinical, therapeutic, or diagnostic use in humans or animals. Not for animal or human consumption.



For full product information, images and publications, please visit our [website](#).

DATA IMAGES



GTX67154-pro Image

3 μ g of GTX67154-pro Human SHP1 protein by SDS-PAGE under reducing condition and visualized by coomassie blue stain



For full product information, images and publications, please visit our [website](#).