

Human Sodium/Potassium ATPase beta 1 protein, His tag (active)

Cat. No. GTX67157-pro

Applications Functional Assay**Species** Human**Package**

50 µg

Applications

Application Note

Specific activity is > 3000 pmol/min/µg, and is defined as the amount of enzyme that hydrolyze 1.0 pmole of Adenosine 5-triphosphate to phosphate per minute per minute at pH 7.5 at 25°C.

Observed MW (kDa) 28-40 kDa.

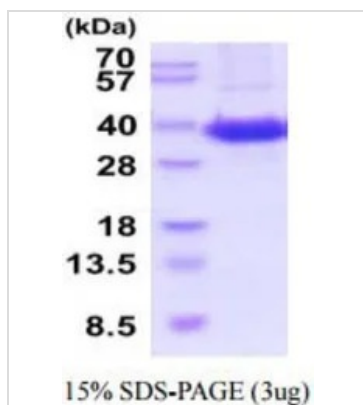
Properties

Form Liquid**Buffer** PBS, 10% Glycerol**Preservative** No preservatives**Storage** Store as concentrated solution. Centrifuge briefly prior to opening vial. For short-term storage (1-2 weeks), store at 4°C. For long-term storage, aliquot and store at -20°C or below. Avoid multiple freeze-thaw cycles.**Concentration** 0.5 mg/ml (Please refer to the vial label for the specific concentration.)**Region/Sequence** C-terminal His-Tag; Length: 250 a.a. Sequence: ADPEFKPTYQ DRVAPPGLTQ IPQIQKTEIS FRPNDPKSYE AYVLNIVRFL EKYKDSAQRD DMIFEDCGDV PSEPKERGDF NHERGERKVC RFKLEWLGNC SGLNDETYGY KEGKPCIIK LNRVLGFKPK PPKNESLETY PVMKYNPVNL PVQCTGKRDE DKDKVGNVEY FGLGNSPGFP LQYYPYGGKL LQPKYLQPLL AVQFTNLTMD TEIRIECKAY GENIGYSEKD RFQGRFDVKI EVKSHHHHHH**Expression System** Baculovirus**Purity** > 90% by SDS-PAGE.**Endotoxin** < 1.0 EU/µg (determined by LAL method)**Conjugation** Unconjugated**Note** For In vitro laboratory use only. Not for any clinical, therapeutic, or diagnostic use in humans or animals. Not for animal or human consumption.

For full product information, images and publications, please visit our [website](#).

Date 2026 / 01 / 28 Page 1 of 2

DATA IMAGES



GTx67157-pro Image

3 µg of GTx67157-pro Human Sodium/Potassium ATPase beta 1 protein (active) by SDS-PAGE under reducing condition and visualized by coomassie blue stain



For full product information, images and publications, please visit our [website](#).