

# Human Sorbitol Dehydrogenase protein, His tag (active)

**Cat. No. GTX67159-pro**
**Applications** Functional Assay

**Species** Human

**Package**

100 µg

**Applications**
**Application Note**

Specific activity is &gt; 20000 pmol/min/µg, and is defined as the amount of enzyme that catalyze D-fructose to D-sorbitol per minute at pH 7.5 at 37°C.

**Properties**
**Form** Liquid

**Buffer** 20mM Tris-HCl, 200mM NaCl, 20% Glycerol, 5mM DTT

**Preservative** No preservatives

**Storage** Store as concentrated solution. Centrifuge briefly prior to opening vial. For short-term storage (1-2 weeks), store at 4°C. For long-term storage, aliquot and store at -20°C or below. Avoid multiple freeze-thaw cycles.

**Concentration** 0.5 mg/ml (Please refer to the vial label for the specific concentration.)

**Region/Sequence**

Full length protein, N-terminal His-Tag; Length: 377 a.a. Sequence: MGSSHHHHHH SGLVPRGSH MAAAAPNNL SLVVHGPDL RLENYPIPEP GPNEVLLRMH SVGICGSDVH YWEYGRIGNF IVKKPMVLGH EASGTVEKVG SSVKHLKPGD RVAIEPGAPR ENDEFCKMGR YNLSPIFFC ATPDDGNLC RFYKHNA AFC YKLPDNTFE EGALIEPLSV GIHACRRGGV TLGHKVLVCG AGPIGMVTL VAKAMGAAQV VVTDLSATRL SKAKEIGADL VLQISKESPO EIARKVEGQL GCKPEVTIEC TGAEASIQAG IYATRS GGTL VLVGLGSEMT TVPLLHAAIR EVDIKGVFRY CNTWPVAISM LASKSVNVKP LVTHRFPLEK ALEAFETFKK GLGLKIMLKC DPSDQNP

**Expression System** E. coli

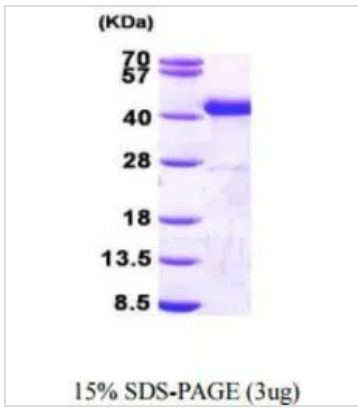
**Purity** > 90% by SDS-PAGE.

**Conjugation** Unconjugated

**Note** For In vitro laboratory use only. Not for any clinical, therapeutic, or diagnostic use in humans or animals. Not for animal or human consumption.

 For full product information, images and publications, please visit our [website](#).

## DATA IMAGES

**GTX67159-pro Image**

3  $\mu$ g of GTX67159-pro Human Sorbitol Dehydrogenase protein (active) by SDS-PAGE under reducing condition and visualized by coomassie blue stain



For full product information, images and publications, please visit our [website](#).