

Human ST2 protein, His tag (active)

Cat. No. GTX67161-pro

Applications Functional Assay**Species** Human**Package**

10 µg

Applications

Application Note

Measured by its ability to inhibit proliferation using D10.G4.1 mouse helper T cells. The ED₅₀ for this effect is less or equal to 10 ng/ml with IL-33.

Observed MW (kDa) 40-57 kDa.

Properties

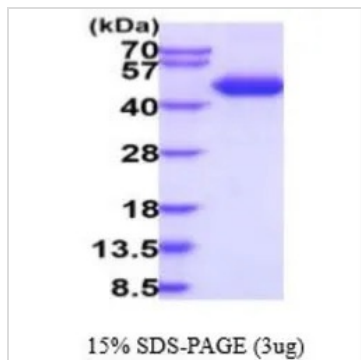
Form Liquid**Buffer** PBS, 10% Glycerol**Preservative** No preservatives**Storage** Store as concentrated solution. Centrifuge briefly prior to opening vial. For short-term storage (1-2 weeks), store at 4°C. For long-term storage, aliquot and store at -20°C or below. Avoid multiple freeze-thaw cycles.**Concentration** 0.5 mg/ml (Please refer to the vial label for the specific concentration.)**Region/Sequence**

C-terminal His-Tag; Length: 318 a.a. Sequence: KFSKQSWGLE NEALIVRCPR QGKPSYTDW YYSQTNKSIP TQERNRVFAS
GQLLKFLPAA VADSGIYTCI VRSPTFNRTG YANVTIYKKQ SDCNVPDYL YSTVSGSEKN SKIYCPTIDL YNWTAPLEWF
KNCQALQGSR YRAHKSFLVI DNMVTEADG YTCKFIHNEN GANYSVTATR SFTVKDEQGF SLFPVIGAPA QNEIKEVEIG
KNANLTCSAC FGKGTQFLAA VLWQLNGTKI TDFGEPRIQQ EEGNQSFNS GLACLDMLR IADVKEEDLL LQYDCLALNL
HGLRRHTVRL SRKNPIDHHS LEHHHHHH

Expression System Baculovirus**Purity** > 95% by SDS-PAGE.**Endotoxin** < 1.0 EU/µg (determined by LAL method)**Conjugation** Unconjugated**Note** For In vitro laboratory use only. Not for any clinical, therapeutic, or diagnostic use in humans or animals. Not for animal or human consumption.

For full product information, images and publications, please visit our [website](#).

DATA IMAGES



GTX67161-pro Image

3 μ g of GTX67161-pro Human ST2 protein (active) by SDS-PAGE under reducing condition and visualized by coomassie blue stain



For full product information, images and publications, please visit our [website](#).