

## Human TRAP protein (active)

Cat. No. GTX67173-pro

**Applications** Functional Assay**Species** Human**Package**

10 µg

## Applications

## Application Note

Specific activity is > 10000 units/mg, and is defined as the amount of enzyme that hydrolyze 1.0 nmoles of p-nitrophenyl phosphate (pNPP) per minute at pH 5.0 at 37°C.

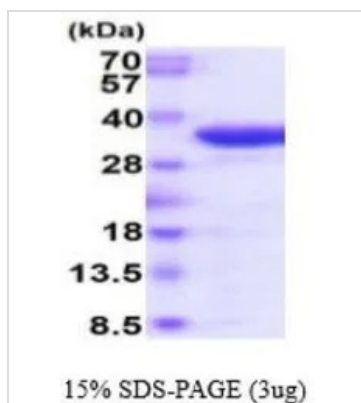
**Observed MW (kDa)** 28-40 kDa.

## Properties

**Form** Liquid**Buffer** PBS, 10% Glycerol**Preservative** No preservatives**Storage** Store as concentrated solution. Centrifuge briefly prior to opening vial. For short-term storage (1-2 weeks), store at 4°C. For long-term storage, aliquot and store at -20°C or below. Avoid multiple freeze-thaw cycles.**Concentration** 0.5 mg/ml (Please refer to the vial label for the specific concentration.)**Region/Sequence** Length: 304 a.a. Sequence: ATPALRFVAV GDWGGVPNAP FHTAREMANA KEIARTVQIL GADFILSLGD NFYFTGVQDI NDKRFQETFE DVFSDRSLRK VPWYVLAGNH DHLGNVSAQI AYSKISKRWV FPSPFYRLHF KIPQTNVSA IFMLDVTLC GNSDDFLSQQ PERPRDVKLA RTQLSWLKKQ LAAAREDYVL VAGHYPVWSI AEHGPTHCLV KQLRPLLATY GVTAYLCGHD HNLQYLQDEN GVGYYLSGAG NFMDPSKRHQ RKVPNGYLRH HYGTEDSLGG FAYVEISSKE MTVTYIEASG KSLFKTRLPR RARP**Expression System** Baculovirus**Purity** > 90% by SDS-PAGE.**Endotoxin** < 1.0 EU/µg (determined by LAL method)**Conjugation** Unconjugated**Note** For In vitro laboratory use only. Not for any clinical, therapeutic, or diagnostic use in humans or animals. Not for animal or human consumption.

For full product information, images and publications, please visit our [website](#).

## DATA IMAGES



### GTX67173-pro Image

3 µg of GTX67173-pro Human TRAP protein (active) by SDS-PAGE under reducing condition and visualized by coomassie blue stain



For full product information, images and publications, please visit our [website](https://www.genetex.com).