

Human Triosephosphate isomerase protein, His tag (active)

Cat. No. GTX67174-pro

Applications Functional Assay

Species Human

Package

20 µg

Applications

Application Note

Specific activity is > 3000 units/mg, in which one unit will convert 1.0 µmole of D-glyceraldehyde-3-phosphate to dihydroxyacetone phosphate per minute at pH 7.5 at 25°C.

Properties

Form Liquid

Buffer 20mM Tris-HCl, 10% Glycerol, 1mM DTT

Preservative No preservatives

Storage Store as concentrated solution. Centrifuge briefly prior to opening vial. For short-term storage (1-2 weeks), store at 4°C. For long-term storage, aliquot and store at -20°C or below. Avoid multiple freeze-thaw cycles.

Concentration 0.5 mg/ml (Please refer to the vial label for the specific concentration.)

Region/Sequence Full length protein, N-terminal His-Tag; Length: 269 a.a. Sequence: MGSSHHHHHH SSGLVPRGSH MAPSRKFFVG GNWKMNGRKQ SLGELIGTLN AAKVPADTEV VCAPPTAYID FARQKLDPKI AVAAQNCYKV TNGAFTGEIS PGMKDCGAT WVLGHSERR HVFGESDELI GQKVAHALAE GLGVIACIGE KLDEREAGIT EKVVFQTKV IADNVKDWK VVLAYEPVWA IGTGKTATPQ QAQEVHEKLR GWLKSNSDA VAQSTRIYG GSVTGATCKE LASQPDVDGF LVGGASLKPE FVDIINAKQ

Expression System E. coli

Purity > 95% by SDS-PAGE.

Endotoxin < 1.0 EU/µg (determined by LAL method)

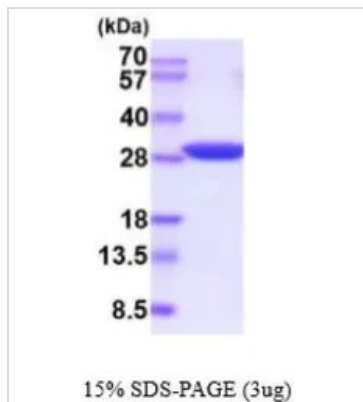
Conjugation Unconjugated

Note For In vitro laboratory use only. Not for any clinical, therapeutic, or diagnostic use in humans or animals. Not for animal or human consumption.



For full product information, images and publications, please visit our [website](#).

DATA IMAGES



GTX67174-pro Image

3 µg of GTX67174-pro Human Triosephosphate isomerase protein (active) by SDS-PAGE under reducing condition and visualized by coomassie blue stain



For full product information, images and publications, please visit our [website](#).