

# Human UCHL3 protein, His tag (active)

**Cat. No. GTX67178-pro**

**Applications** Functional Assay

**Species** Human

**Package**

100 µg

## Applications

### Application Note

Specific activity is > 1500 pmol/min/µg, and is defined as the amount of enzyme that hydrolysis 1.0 pmole of ubiquitin-AMC per minute at pH 7.5 at 37°C.

## Properties

**Form** Liquid

**Buffer** 20mM Tris-HCl, 10% Glycerol, 1mM DTT

**Preservative** No preservatives

**Storage** Store as concentrated solution. Centrifuge briefly prior to opening vial. For short-term storage (1-2 weeks), store at 4°C. For long-term storage, aliquot and store at -20°C or below. Avoid multiple freeze-thaw cycles.

**Concentration** 1 mg/ml (Please refer to the vial label for the specific concentration.)

### Region/Sequence

Full length protein, N-terminal His-Tag; Length: 250 a.a. Sequence: MGSSHHHHHH SSGLVPRGSH MEGQRWLPLE ANPEVTNQFL KQLGLHPNWQ FVDVYGM DPE LLSMVPRPVC AVLLFPITE KYEVFRTEEE EKIKSQGDV TSSVYFMKQT ISNACGTIGL IHAIANNDK MHFESGSLK KFLEESVMS PEERARYLEN YDAIRVTHET SAHEGQTEAP SIDEKVDLHF IALVHVDGHL YELDGRKPPF INHGETSDET LLEDAIEVCK KFMERDPDEL RFNAIALSAA

**Expression System** E. coli

**Purity** > 95% by SDS-PAGE.

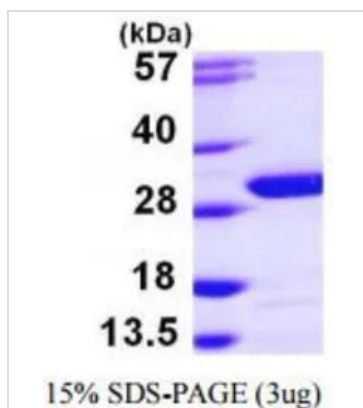
**Conjugation** Unconjugated

**Note** For In vitro laboratory use only. Not for any clinical, therapeutic, or diagnostic use in humans or animals. Not for animal or human consumption.



For full product information, images and publications, please visit our [website](#).

## DATA IMAGES



### GTX67178-pro Image

3  $\mu$ g of GTX67178-pro Human UCHL3 protein (active) by SDS-PAGE under reducing condition and visualized by coomassie blue stain



For full product information, images and publications, please visit our [website](#).