

Human UCHL5 protein, His tag (active)

Cat. No. GTX67180-pro

Applications Functional Assay**Species** Human**Package**

100 µg

Applications

Application Note

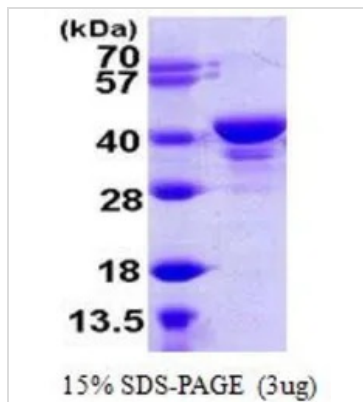
Specific activity: > 500 pmole/min/µg. Measured by the hydrolysis of ubiquitin-AMC at pH 8.0, at 37°C.

Properties

Form Liquid**Buffer** 20mM Tris-HCl, 200mM NaCl, 30% Glycerol, 0.1mM PMSF, 2mM EDTA, 5mM DTT**Preservative** No preservatives**Storage** Store as concentrated solution. Centrifuge briefly prior to opening vial. For short-term storage (1-2 weeks), store at 4°C. For long-term storage, aliquot and store at -20°C or below. Avoid multiple freeze-thaw cycles.**Concentration** 0.5 mg/ml (Please refer to the vial label for the specific concentration.)**Region/Sequence** Full length protein, N-terminal His-Tag; Length: 349 a.a. Sequence: MGSSHHHHHH SSGLVPRGSH MTGNAGEWCL MESDPGVFTE LIKGFGCRGA QVEEWSLEP ENFEKLKPVH GLIFLKWQP GEEPAGSVVQ DSRLDTIFFA KQVINNACAT QAIVSVLLNC THQDVHLGET LSEFKEFSQS FDAAMKGLAL SNSDVIRQVH NSFARQQMFE FDTKTSAKEE DAFHFVSYVP VNGRLYELDG LREGPIDLGA CNQDDWISAV RPVIEKRIQK YSEGEIRFNL MAIVSDRKM I YEQKIAELQR QLAEPEPMDT DQGNSMLSAI QSEVAKNQML IEEEVQKLKR YKIENIRRKH NYLPFIMELL KTLAEHQQLI PLVEKAKEKQ NAKKAQETK**Expression System** E. coli**Purity** > 90% by SDS-PAGE.**Conjugation** Unconjugated**Note** For In vitro laboratory use only. Not for any clinical, therapeutic, or diagnostic use in humans or animals. Not for animal or human consumption.

For full product information, images and publications, please visit our [website](#).

DATA IMAGES



GTX67180-pro Image

3 μ g of GTX67180-pro Human UCHL5 protein (active) by SDS-PAGE under reducing condition and visualized by coomassie blue stain



For full product information, images and publications, please visit our [website](#).