

Human IL3 protein, His tag (active)

Cat. No. GTX67187-pro

Applications Functional Assay**Species** Human**Package**

100 µg

Applications

Application Note

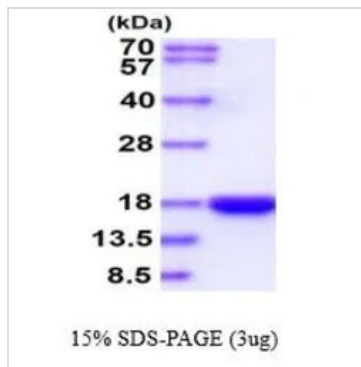
Measured in a cell proliferation assay using TF-1 human erythroleukemic cells. The ED₅₀ for this effects less or equal to 1 ng/ml.

Properties

Form Liquid**Buffer** 20mM Tris, 10% Glycerol, 0.2mM PMSF**Preservative** No preservatives**Storage** Store as concentrated solution. Centrifuge briefly prior to opening vial. For short-term storage (1-2 weeks), store at 4°C. For long-term storage, aliquot and store at -20°C or below. Avoid multiple freeze-thaw cycles.**Concentration** 1 mg/ml (Please refer to the vial label for the specific concentration.)**Region/Sequence** N-terminal His-Tag; Length: 154 a.a. Sequence: MGSSHHHHHH SGLVPRGSH MAPMTQTSL KTSWVNCSNM IDEIITHLKQ PPLPLDFNN LNGEDQDILM ENNLRRPNLE AFNRAVKSQ NASAIESILK NLLPCLPLAT AAPTRHPIHI KDGDWNEFRR KLTFYKLTLE NAQAQQTLS LAIF**Expression System** E. coli**Purity** > 90% by SDS-PAGE.**Endotoxin** < 1.0 EU/µg (determined by LAL method)**Conjugation** Unconjugated**Note** For In vitro laboratory use only. Not for any clinical, therapeutic, or diagnostic use in humans or animals. Not for animal or human consumption.

For full product information, images and publications, please visit our [website](#).

DATA IMAGES



GTX67187-pro Image

3 µg of GTX67187-pro Human IL3 protein (active) by SDS-PAGE under reducing condition and visualized by coomassie blue stain



For full product information, images and publications, please visit our [website](#).