

Human Alcohol dehydrogenase 1A protein, His tag

Cat. No. GTX67195-pro
Species Human

Package

50 µg

Applications
Observed MW (kDa) 41 kDa.

Properties
Form Liquid

Buffer PBS, 10% Glycerol

Preservative No preservatives

Storage Store as concentrated solution. Centrifuge briefly prior to opening vial. For short-term storage (1-2 weeks), store at 4°C. For long-term storage, aliquot and store at -20°C or below. Avoid multiple freeze-thaw cycles.

Concentration 0.5 mg/ml (Please refer to the vial label for the specific concentration.)

Region/Sequence

Full length protein, C-terminal His-Tag; MSTAGKVIKC KAAVLWELKK PFSIEEVEVA PPKAHEVRIK MVAVGICGTD
DHVVS GMTMT PLPVILGHEA AGIVESVGEG VTTVKPGDKV IPLAIPQCGK CRICKNPESN YCLKNDVSNP QGTLQDGTSR
FTCRRKPIHH FLGISTFSQY TWDENAVAK IDAASPLEKV CLIGCGFSTG YGSAVNVAKV TPGSTCAVFG LGGVGLSAIM
GCKAAGAARI IAVDINKDKF AKAKELGATE CINPQDYKKP IQEVLKEMTD GGVDFFSEVI GRLDTMMASL LCCHEACGTS
VIVGVPPDSQ NLSMNPMLLL TGRTWKGAIL GGFKSKECVP KLVADFMACK FSLDALITHV LPFEKINEGF DLLHSGKSIR
TILMFHHHHH H

Expression System Baculovirus

Purity > 95% by SDS-PAGE.

Endotoxin < 1.0 EU/µg (determined by LAL method)

Conjugation Unconjugated

Note

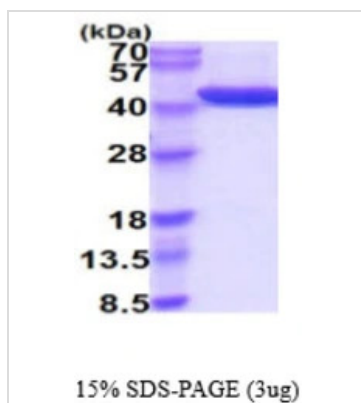
For laboratory research use only. Not for any clinical, therapeutic, or diagnostic use in humans or animals. Not for animal or human consumption.

Purchasers shall not, and agree not to enable third parties to, analyze, copy, reverse engineer or otherwise attempt to determine the structure or sequence of the product.



For full product information, images and publications, please visit our [website](#).

DATA IMAGES



GTX67195-pro Image

3μg Human Alcohol dehydrogenase 1A protein (GTX67195-pro) by SDS-PAGE under reducing condition and visualized by coomassie blue stain.



For full product information, images and publications, please visit our [website](https://www.genetex.com).