

## Human AKT1 protein, His tag

Cat. No. GTX67206-pro

Species Human

Package  
100 µg

## Applications

Observed MW (kDa) 56 kDa.

## Properties

Form Liquid

Buffer 20mM Tris-HCl, 10% Glycerol

Preservative No preservatives

Storage Store as concentrated solution. Centrifuge briefly prior to opening vial. For short-term storage (1-2 weeks), store at 4°C. For long-term storage, aliquot and store at -20°C or below. Avoid multiple freeze-thaw cycles.

Concentration 0.5 mg/ml (Please refer to the vial label for the specific concentration.)

## Region/Sequence

Full length protein, N-terminal His-Tag; MGSSHHHHHH SSSLVPRGSH MGSMSDVAIV KEGWLHKRGE YIKTWRPRYF  
 LLKNDGTFIG YKERPDVDQ REAPLNNSV AQCQLMKTER PRPNTFIIRC LQWTTVIERT FHVETPEERE EWTTAIQTVA  
 DGLKKQEEEE MDFRSGSPSD NSGAEEMEVS LAKPKHRVTM NEFEYLKLLG KGTFGKVLV KEKATGRYYA MKILKKEVIV  
 AKDEVAHTLT ENRVLQNSRH PFLTALKYSF QTHDRLCFVM EYANGGELFF HLSRERVSE DRARFYGAEI VSALDYHSE  
 KNVYRD LKL ENLMLDKDGH IKITDFGLCK EGIKDGATMK TFCGTPEYLA PEVLEDNDYG RAVDWWGLGV VMYEMMCGRL  
 PFYNQDHEKL FELILMEEIR FPRTLGPEAK SLLSGLLKKD PKQRLGGGSE DAKEIMQHRF FAGIVWQHVV EKKLSPFPKP  
 QVTSETDTRY FDEEFTAQMI TITPPDQDDS MECVDSERRP HFPQFSYSAS GTA

Expression System E. coli

Purity &gt; 85% by SDS-PAGE.

Conjugation Unconjugated

## Note

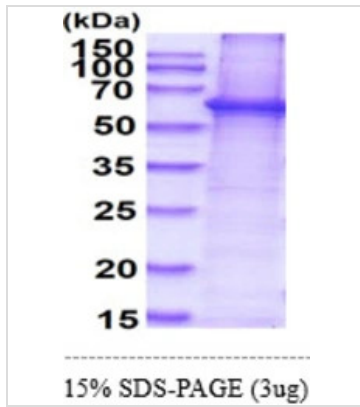
For laboratory research use only. Not for any clinical, therapeutic, or diagnostic use in humans or animals. Not for animal or human consumption.

Purchasers shall not, and agree not to enable third parties to, analyze, copy, reverse engineer or otherwise attempt to determine the structure or sequence of the product.



For full product information, images and publications, please visit our [website](#).

## DATA IMAGES

**GTX67206-pro Image**

3 $\mu$ g Human AKT1 protein (GTX67206-pro) by SDS-PAGE under reducing condition and visualized by coomassie blue stain.



For full product information, images and publications, please visit our [website](#).