

Human AKT1 protein, His tag

Cat. No. GTX67207-pro

Species Human

Package

50 µg

Applications

Observed MW (kDa) 57 kDa.

Properties

Form Liquid

Buffer PBS, 20% Glycerol

Preservative No preservatives

Storage Store as concentrated solution. Centrifuge briefly prior to opening vial. For short-term storage (1-2 weeks), store at 4°C. For long-term storage, aliquot and store at -20°C or below. Avoid multiple freeze-thaw cycles.

Concentration 0.5 mg/ml (Please refer to the vial label for the specific concentration.)

Region/Sequence

Full length protein, C-terminal His-Tag; MSDVAIVKEG WLHKRGEYIK TWRPRYFLK NDGTFIGYKE RPQDVDQREA
 PLNNFSVAQC QLMKTERPRP NTFIIRCLQW TTVIERTFHV ETPEEREWEW TAIQTVADGL KKQEEEEEMDF RSGSPSDNSG
 AEEMEVSIAK PKHRVTMNEF EYLKLLGKGT FGKVLVKEK ATGRYYAMKI LKKEVIVAKD EVAHTLTENR VLQNSRHPFL
 TALKYSFQTH DRLCFVMEYA NGGELFFHLS RERVFSEDRA RFGAEIVSA LDYLHSEKNV VYRDLKLENL MLDKDGHIKI
 TDFGLCKEGL KDGATMKTFC GTPEYLAPEV LEDNDYGRAV DWWWGLGVVY EMMCGRLPFY NQDHEKLFEL ILMEEIRFPR
 TLGPEAKSLL SGLLKKDPKQ RLGGSSEDAK EIMQHRFFAG IWWQHVVYEK LSPPFKPVQV SETDTRYFDE EFTAQMITIT
 PPDQDDSMC VDSERRPHFP QFSYSASGTA LEHHHHHHH

Expression System Baculovirus

Purity > 90% by SDS-PAGE.

Endotoxin < 1.0 EU/µg (determined by LAL method)

Conjugation Unconjugated

Note

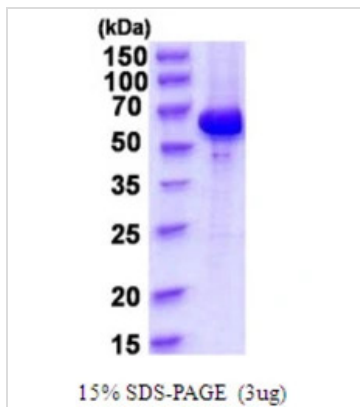
For laboratory research use only. Not for any clinical, therapeutic, or diagnostic use in humans or animals. Not for animal or human consumption.

Purchasers shall not, and agree not to enable third parties to, analyze, copy, reverse engineer or otherwise attempt to determine the structure or sequence of the product.



For full product information, images and publications, please visit our [website](#).

DATA IMAGES

**GTX67207-pro Image**

3µg Human AKT1 protein (GTX67207-pro) by SDS-PAGE under reducing condition and visualized by coomassie blue stain.



For full product information, images and publications, please visit our [website](#).