

Human CHI3L1 protein, His tag

Cat. No. GTX67296-pro

Species Human

Package

10 µg

Applications

Observed MW (kDa) 46 kDa.

Properties

Form Liquid

Buffer PBS

Preservative No preservatives

Storage Store as concentrated solution. Centrifuge briefly prior to opening vial. For short-term storage (1-2 weeks), store at 4°C. For long-term storage, aliquot and store at -20°C or below. Avoid multiple freeze-thaw cycles.

Concentration 0.25 mg/ml (Please refer to the vial label for the specific concentration.)

Region/Sequence

Full length protein, C-terminal His-Tag; MGVKASQTGF WLVLQCCS AYKLVICYTS WSQYREGDGS CFPDALDRFL CTHIYSFAN ISNDHIDTWE WNDVTLYGML NTLKRNPNL KTLISVGGWN FGSQRFSKIA SNTQSRRTFI KSVPPFLRTH GFDGLDLAWL YPGRRDKQHF TTIKEMKAE FIKEAQPQKK QLLLSAALSA GKVTIDSSYD IAKISQHLDF ISIMTYDFHG AWRGTTGHHS PLFRGQEDAS PDRFSNTDYA VGYMLRLGAP ASKLVMIPT FGRSFTLASS ETGVGAPISG PGIPGRFTE AGTLAYEIC DFLRGATVHR ILGQQVPYAT KGNQWVGYDD QESVSKVQY LKDRQLAGAM VWALDLDDFQ GSFCGQDLRF PLTNAIKDAL AATKLGPEQK LISEEDLNSA VDHHHHHH

Expression System CHO cells

Purity > 90% by SDS-PAGE.

Endotoxin < 1.0 EU/µg (determined by LAL method)

Conjugation Unconjugated

Note

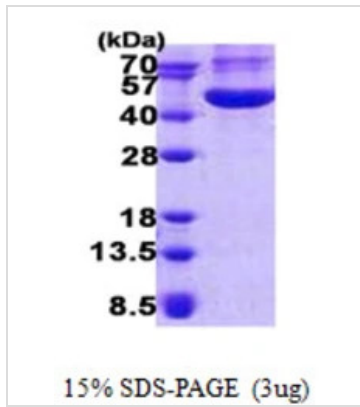
For laboratory research use only. Not for any clinical, therapeutic, or diagnostic use in humans or animals. Not for animal or human consumption.

Purchasers shall not, and agree not to enable third parties to, analyze, copy, reverse engineer or otherwise attempt to determine the structure or sequence of the product.



For full product information, images and publications, please visit our [website](#).

DATA IMAGES

**GTX67296-pro Image**

3 μ g Human CHI3L1 protein (GTX67296-pro) by SDS-PAGE under reducing condition and visualized by coomassie blue stain.



For full product information, images and publications, please visit our [website](#).