

## Human DARS protein, His tag

**Cat. No. GTX67346-pro****Species** Human**Package**

100 µg

## Applications

**Observed MW (kDa)** 57 kDa.

## Properties

**Form** Liquid**Buffer** 20mM Tris-HCl, 150mM NaCl, 40% Glycerol, 1mM DTT**Preservative** No preservatives**Storage** Store as concentrated solution. Centrifuge briefly prior to opening vial. For short-term storage (1-2 weeks), store at 4°C. For long-term storage, aliquot and store at -20°C or below. Avoid multiple freeze-thaw cycles.**Concentration** 1 mg/ml (Please refer to the vial label for the specific concentration.)**Region/Sequence**

Full length protein, N-terminal His-Tag; MGSSHHHHHH SSSLVPRGSH MPSASASRKS QEKPREIMDA AEDYAKERYG  
 ISSMIQSQEK PDRVLVVRVD LTIQKADEVW WVRARVHTSR AKGKQCFLVL RQQQFNVAL VAVGDHASKQ MVKFAANINK  
 ESIVDVEGW RKNVQKIGSC TQQDVELHVQ KIVISLAEP RLPLQLDDAV RPEAEGEEEG RATVNQDTRL DNRVIDLRYS  
 TSQAVFRLQS GICHLFRETL INKGFVEIQT PKIISAASEG GANVFTVSYF KNNAYLAQSP QLYKQMCICA DFEKVFSIGP VFRAEDSNTH  
 RHLTEFVGLD IEMAFNYHYH VMEEIADTM VQIFKGLQER FQTEIQTVNK QFPCEPFKFL EPTLRLEYCE ALAMLREAGV  
 EMGDEDDLST PNEKLLGHLV KEKYDITDFYI LDKYPLAVRP FYTMPDPRNP KQSNSYDMFM RGEELSGAQ RIHDPQLLTS  
 RALHHGIDLE KIKAYIDSFR FGAPPHAGGG IGLERVTMLF LGLHNVRQTS MFPRDPKRLT P

**Expression System** E. coli**Purity** > 85% by SDS-PAGE.**Conjugation** Unconjugated**Note**

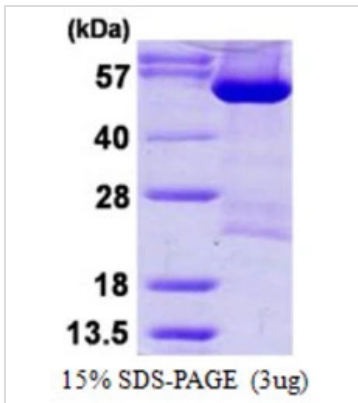
For laboratory research use only. Not for any clinical, therapeutic, or diagnostic use in humans or animals. Not for animal or human consumption.

Purchasers shall not, and agree not to enable third parties to, analyze, copy, reverse engineer or otherwise attempt to determine the structure or sequence of the product.



For full product information, images and publications, please visit our [website](#).

## DATA IMAGES

**GTX67346-pro Image**

3 $\mu$ g Human DARS protein (GTX67346-pro) by SDS-PAGE under reducing condition and visualized by coomassie blue stain.



For full product information, images and publications, please visit our [website](#).