

Human HMGB1 protein, His tag

Cat. No. GTX67464-pro

Species	Human
---------	-------

Package	100 µg
---------	--------

Applications

Observed MW (kDa)	25 kDa.
-------------------	---------

Properties

Form	Liquid
------	--------

Buffer	20mM Tris-HCl, 1mM EDTA, 0.5mM DTT, 10% Glycerol
--------	--

Preservative	No preservatives
--------------	------------------

Storage	Store as concentrated solution. Centrifuge briefly prior to opening vial. For short-term storage (1-2 weeks), store at 4°C. For long-term storage, aliquot and store at -20°C or below. Avoid multiple freeze-thaw cycles.
---------	--

Concentration	1 mg/ml (Please refer to the vial label for the specific concentration.)
---------------	--

Region/Sequence	Full length protein, C-terminal His-Tag; MGKGDPPKPR GKMSSYAFFV QTCREEHKKK HPDASVNFSE FSKKCSERWK TMSAKEKGKF EDMAKADKAR YEREMKTYIP PKGETKKKFK DPNAPKRPPS AFFLFCSEYR PKIKGEHPGL SIGDVAKKLG EMWNNTAADD KQPYEKKA AK LKEYEKDIA AYRAKGKPA AKKGWVKA EK SKKKKEEEED EDEEDEEEEE EDEEDEEEEE DDDDELEHHH HHH
-----------------	--

Expression System	Baculovirus
-------------------	-------------

Purity	> 90% by SDS-PAGE.
--------	--------------------

Endotoxin	< 1.0 EU/µg (determined by LAL method)
-----------	--

Conjugation	Unconjugated
-------------	--------------

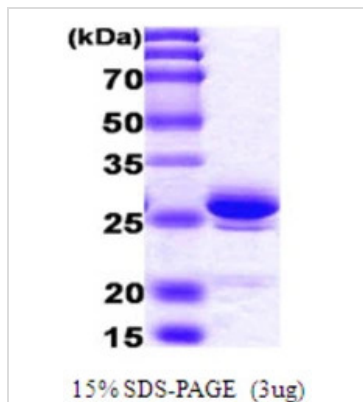
Note	For laboratory research use only. Not for any clinical, therapeutic, or diagnostic use in humans or animals. Not for animal or human consumption.
------	---

Note	Purchasers shall not, and agree not to enable third parties to, analyze, copy, reverse engineer or otherwise attempt to determine the structure or sequence of the product.
------	---



For full product information, images and publications, please visit our [website](#).

DATA IMAGES



GTX67464-pro Image

3μg Human HMGB1 protein (GTX67464-pro) by SDS-PAGE under reducing condition and visualized by coomassie blue stain.



For full product information, images and publications, please visit our [website](#).