

## Human Cytokeratin 14 protein, His tag

Cat. No. GTX67513-pro

Species Human

Package  
100 µg

## Applications

Observed MW (kDa) 52 kDa.

## Properties

Form Liquid

Buffer 20mM Tris-HCl, 0.4M Urea, 10% Glycerol

Preservative No preservatives

Storage Store as concentrated solution. Centrifuge briefly prior to opening vial. For short-term storage (1-2 weeks), store at 4°C. For long-term storage, aliquot and store at -20°C or below. Avoid multiple freeze-thaw cycles.

Concentration 1 mg/ml (Please refer to the vial label for the specific concentration.)

## Region/Sequence

Full length protein, N-terminal His-Tag; MGSSHHHHHH SSSLVPRGSH MTTCSRQFTS SSSMKGSCGI GGGIGGGSSR  
 ISSVLAGGSC RAPSTYGGGL SVSSSRFSSG GAYGLGGGYG GGFSSSSSF GSGFGGGYGG GLGTGLGGGF GGGFAGGDGL  
 LVGSEKVTMQ NLNDRLASYL DKVRALEEAN ADLEVKIRDW YQRQRPAEIK DYSPYFKTIE DLRNKILTAT VDNANVLLQI  
 DNARLAADD F RTKYETELNL RMSVEADING LRRVLDLTL ARADLEMQIE SLKEELAYLK KNHEEEMNAL RGQVGGDVNV  
 EMDAAPGVDL SRILNEMRDQ YEKMAEKNRK DAEWFFTKT EELNREVATN SELVQSGKSE ISELRRMQN LEIELQSLS  
 MKASLENSLE ETKGRYCMQL AQIQEMIGSV EEQLAQLRCE MEQQNQEYKI LLDVKTRLEQ EIATYRRLLE GEDAHLSSSQ  
 FSSGSQSSRD VTSSSRQIRT KVMDVHDGKV VSTHEQVLRT KN

Expression System E. coli

Purity &gt; 90% by SDS-PAGE.

Conjugation Unconjugated

## Note

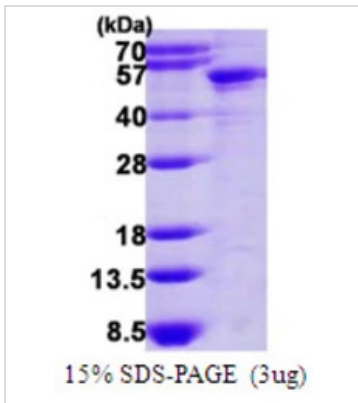
For laboratory research use only. Not for any clinical, therapeutic, or diagnostic use in humans or animals. Not for animal or human consumption.

Purchasers shall not, and agree not to enable third parties to, analyze, copy, reverse engineer or otherwise attempt to determine the structure or sequence of the product.



For full product information, images and publications, please visit our [website](#).

## DATA IMAGES

**GTX67513-pro Image**

3 $\mu$ g Human Cytokeratin 14 protein (GTX67513-pro) by SDS-PAGE under reducing condition and visualized by coomassie blue stain.



For full product information, images and publications, please visit our [website](#).