

Human MAD2L1 protein, His tag

Cat. No. GTX67528-pro

Species	Human
----------------	-------

Package	10 µg
----------------	-------

Applications

Observed MW (kDa)	24 kDa.
--------------------------	---------

Properties

Form	Liquid
-------------	--------

Buffer	20mM Tris-HCl, 100mM NaCl, 20% Glycerol, 1mM DTT
---------------	--

Preservative	No preservatives
---------------------	------------------

Storage	Store as concentrated solution. Centrifuge briefly prior to opening vial. For short-term storage (1-2 weeks), store at 4°C. For long-term storage, aliquot and store at -20°C or below. Avoid multiple freeze-thaw cycles.
----------------	--

Concentration	0.5 mg/ml (Please refer to the vial label for the specific concentration.)
----------------------	--

Region/Sequence	Full length protein, N-terminal His-Tag; MGSSHHHHHH SSGLVPRGSH MALQLSREQG ITRGSAEIV AEFFSFGINS ILYQRGIYPS ETFTRVQKYG LTLVTTDL E LIKYLNNVVE QLKDWLYKCS VQKLVVVISN IESGEVLERW QFDIECDKTA KDDSAPREKS QKAIQDEIRS VIRQITATVT FLPLLEVSCS FDLIIYTDKD LVVPEKWEES GPQFITNSEE VRLRSFTTI HKVNSMVAYK IPVND
------------------------	--

Expression System	E. coli
--------------------------	---------

Purity	> 95% by SDS-PAGE.
---------------	--------------------

Conjugation	Unconjugated
--------------------	--------------

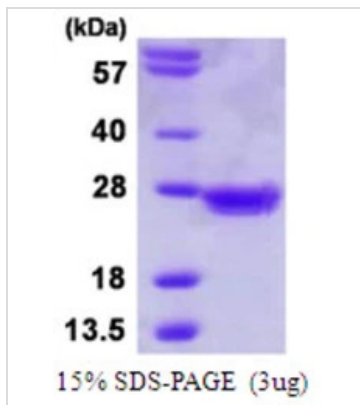
Note	For laboratory research use only. Not for any clinical, therapeutic, or diagnostic use in humans or animals. Not for animal or human consumption.
-------------	---

Note	Purchasers shall not, and agree not to enable third parties to, analyze, copy, reverse engineer or otherwise attempt to determine the structure or sequence of the product.
-------------	---



For full product information, images and publications, please visit our [website](#).

DATA IMAGES

**GTX67528-pro Image**

3µg Human MAD2L1 protein (GTX67528-pro) by SDS-PAGE under reducing condition and visualized by coomassie blue stain.



For full product information, images and publications, please visit our [website](#).