

## Human MGMT protein, His tag

Cat. No. GTX67551-pro

Species	Human
---------	-------

Package	100 µg
---------	--------

## Applications

Observed MW (kDa)	22 kDa.
-------------------	---------

## Properties

Form	Liquid
------	--------

Buffer	20mM Tris-HCl, 10% Glycerol, 1mM DTT
--------	--------------------------------------

Preservative	No preservative
--------------	-----------------

Storage	Store as concentrated solution. Centrifuge briefly prior to opening vial. For short-term storage (1-2 weeks), store at 4°C. For long-term storage, aliquot and store at -20°C or below. Avoid multiple freeze-thaw cycles.
---------	--

Concentration	0.5 mg/ml (Please refer to the vial label for the specific concentration.)
---------------	--

Region/Sequence	Full length protein, N-terminal His-Tag; MGSSHHHHHH SSGLVPRGSH MDKDCMKRT TLDSPGLKLE LSGCEQGLHE IKLLGKGTSA ADAVEVPAPA AVLGGPEPLM QCTAWLNAYF HQPEAIEEFP VPAFHHPVFQ QESFTRQVLW KLLKWKFGF VISYQQLAAL AGNPKAARAV GGAMRGNPVP ILIPCHRVVC SSGAVGNYSGLAVKEWLLA HEGHRLGKPG LGGSSGLAGA WLKGAGATSG SPPAGR N
-----------------	---

Expression System	E. coli
-------------------	---------

Purity	> 95% by SDS-PAGE.
--------	--------------------

Endotoxin	< 1.0 EU/µg (determined by LAL method)
-----------	--

Conjugation	Unconjugated
-------------	--------------

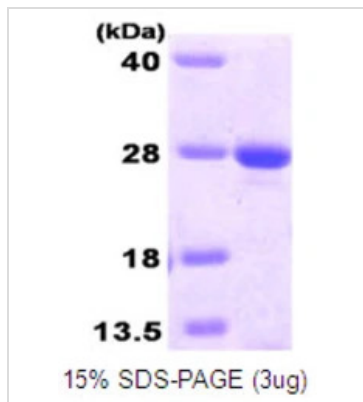
Note	For laboratory research use only. Not for any clinical, therapeutic, or diagnostic use in humans or animals. Not for animal or human consumption.
------	---

Note	Purchasers shall not, and agree not to enable third parties to, analyze, copy, reverse engineer or otherwise attempt to determine the structure or sequence of the product.
------	---



For full product information, images and publications, please visit our [website](#).

## DATA IMAGES



### GTX67551-pro Image

3μg Human MGMT protein (GTX67551-pro) by SDS-PAGE under reducing condition and visualized by coomassie blue stain.



For full product information, images and publications, please visit our [website](#).