

Human NIPP1 protein, His tag

Cat. No. GTX67662-pro

Species	Human
----------------	-------

Package	50 µg
----------------	-------

Applications

Observed MW (kDa)	38 kDa.
--------------------------	---------

Properties

Form	Liquid
-------------	--------

Buffer	20mM Tris-HCl, 200mM NaCl, 20% Glycerol, 2mM DTT
---------------	--

Preservative	No preservatives
---------------------	------------------

Storage	Store as concentrated solution. Centrifuge briefly prior to opening vial. For short-term storage (1-2 weeks), store at 4°C. For long-term storage, aliquot and store at -20°C or below. Avoid multiple freeze-thaw cycles.
----------------	--

Concentration	0.5 mg/ml (Please refer to the vial label for the specific concentration.)
----------------------	--

Region/Sequence	Full length protein, C-terminal His-Tag; MAAAANSQSS LPLFDCPTWA GKPPPGLHLD VVKGDKLIK LIIDEKKYYL FGRNPDLCDF TIDHQSCSRV HAALVYHKHL KRVFLIDLNS THGTFLGHIR LEPHKPQQIP IDSTVSFGAS TRAYTLREKP QTLPSAVKGD EKMGGEDDEL KGLLGLPEEE TELDNLTEFN TAHNKRISTL TIEEGNLDIQ RPKRKRKNSR VTFSEDEII NPEDVDPSVG RFRNMVQTAV VPVKKRVEG PGSGLLEESG SRRMQNFAFS GGLYGGLPPT HSEAGSQPHG IHGTALIGGL PMPYPNLAPD VDLTPVPSA VNMNPAPNPA VYNPEAVNEP KKKKYAKEAW PGKKTPSSL IVEHHHHHH
------------------------	--

Expression System	E. coli
--------------------------	---------

Purity	> 90% by SDS-PAGE.
---------------	--------------------

Conjugation	Unconjugated
--------------------	--------------

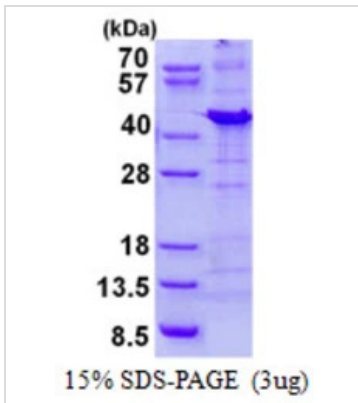
Note	For laboratory research use only. Not for any clinical, therapeutic, or diagnostic use in humans or animals. Not for animal or human consumption.
-------------	---

Note	Purchasers shall not, and agree not to enable third parties to, analyze, copy, reverse engineer or otherwise attempt to determine the structure or sequence of the product.
-------------	---



For full product information, images and publications, please visit our [website](#).

DATA IMAGES

**GTX67662-pro Image**

3 μ g Human NIPP1 protein (GTX67662-pro) by SDS-PAGE under reducing condition and visualized by coomassie blue stain.



For full product information, images and publications, please visit our [website](#).