

Human SKP1 protein

Cat. No. GTX67821-pro

Species Human**Package**
100 µg

Applications

Observed MW (kDa) 19 kDa.

Properties

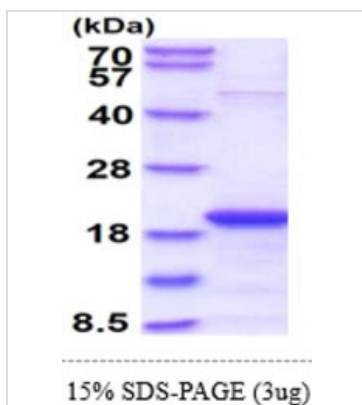
Form Liquid**Buffer** 20mM Tris-HCl, 50mM NaCl, 10% Glycerol**Preservative** No preservative**Storage** Store as concentrated solution. Centrifuge briefly prior to opening vial. For short-term storage (1-2 weeks), store at 4°C. For long-term storage, aliquot and store at -20°C or below. Avoid multiple freeze-thaw cycles.**Concentration** 1 mg/ml (Please refer to the vial label for the specific concentration.)**Region/Sequence** Full length protein, MPSIKLQSSD GEIFEVDVEI AKQSVTIKTM LEDLGMDDEG DDDPVPLPNV NAAILKKVIQ WCTHHKDDPP PPEDDENKEK RTDDIPVWDQ EFLKVDQGT L FELILAANYL DIKGLLDVTC KTVANMIK GK TPEEIRKTFN IKNDFTEEEE AQVGSTQFCL**Expression System** E. coli**Purity** > 90% by SDS-PAGE.**Conjugation** Unconjugated

Note

For laboratory research use only. Not for any clinical, therapeutic, or diagnostic use in humans or animals. Not for animal or human consumption.

Purchasers shall not, and agree not to enable third parties to, analyze, copy, reverse engineer or otherwise attempt to determine the structure or sequence of the product.

DATA IMAGES



GTX67821-pro Image

3µg Human SKP1 protein (GTX67821-pro) by SDS-PAGE under reducing condition and visualized by coomassie blue stain.

For full product information, images and publications, please visit our [website](https://www.genetex.com).