

# Human VEGF165 protein, His tag

**Cat. No. GTX67937-pro**

**Species** Human

**Package**

20 µg

## Applications

**Observed MW (kDa)** 20 kDa.

## Properties

**Form** Liquid

**Buffer** PBS, 30% Glycerol, 1mM DTT, 0.1mM PMSF

**Preservative** No preservatives

**Storage** Store as concentrated solution. Centrifuge briefly prior to opening vial. For short-term storage (1-2 weeks), store at 4°C. For long-term storage, aliquot and store at -20°C or below. Avoid multiple freeze-thaw cycles.

**Concentration** 0.25 mg/ml (Please refer to the vial label for the specific concentration.)

**Region/Sequence** Full length protein, C-terminal His-Tag; APMAEGGGQN HHEWVKFMDV YQRSYCHPIE TLVDIFQEYP DEIEYIFKPS  
CVPLMRCGGC CNDEGLECVP TEESNITMQI MRIKPHQGQH IGEMSFLQHN KCECRPKKDR ARQENPCGPC SERRKHLFVQ  
DPQTCKCSCK NTDSRCKARQ LELNERTCRC DKPRRHHHHH H

**Expression System** Baculovirus

**Purity** > 85% by SDS-PAGE.

**Endotoxin** < 1.0 EU/µg (determined by LAL method)

**Conjugation** Unconjugated

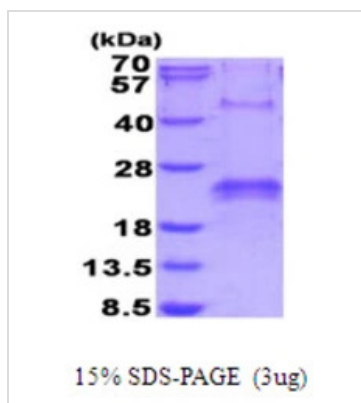
**Note** For laboratory research use only. Not for any clinical, therapeutic, or diagnostic use in humans or animals. Not for animal or human consumption.

Purchasers shall not, and agree not to enable third parties to, analyze, copy, reverse engineer or otherwise attempt to determine the structure or sequence of the product.



For full product information, images and publications, please visit our [website](#).

## DATA IMAGES



### GTX67937-pro Image

3μg Human VEGF 165 protein (GTX67937-pro) by SDS-PAGE under reducing condition and visualized by coomassie blue stain.



For full product information, images and publications, please visit our [website](https://www.genetex.com).