

Human Mortality factor 4 like 2 protein, His tag

Cat. No. GTX68085-pro

Species Human

Package
100 µg

Applications

Observed MW (kDa) 32 kDa.

Properties

Form Liquid

Buffer 20mM Tris-HCl, 20% Glycerol, 1mM DTT

Preservative No preservatives

Storage Store as concentrated solution. Centrifuge briefly prior to opening vial. For short-term storage (1-2 weeks), store at 4°C. For long-term storage, aliquot and store at -20°C or below. Avoid multiple freeze-thaw cycles.

Concentration 0.5 mg/ml (Please refer to the vial label for the specific concentration.)

Region/Sequence Full length protein, N-terminal His-Tag; MGSSHHHHHH SSGLVPRGSH MSSRKQGSQP RGQQSAEEEN FKKPTRSNMQ RSKMRGASSG KKTAGPQQKN LEPALPGRWG GRSAENPPSG SVRKRKNKQ KTPGNGDGGG TSEAPQPPRK KRARADPTVE SEEAFFKNRME VKVKIPEELK PWLVEDWDLV TRQKQLFQLP AKKNVDAILE EYANCKKSQG NVDNKEYAVN EVVAGIKEYF NVMLGTQLLY KFERPQYAEI LLAHPDAPMS QVYGAPHLLR LFVRIGAMLA YTPLDEKSLA LLLGYLHDFL KYLAKNSASL FTASDYKVAS AEYHRKAL

Expression System E. coli

Purity > 90% by SDS-PAGE.

Conjugation Unconjugated

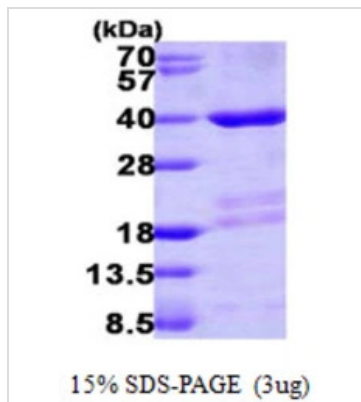
Note For laboratory research use only. Not for any clinical, therapeutic, or diagnostic use in humans or animals. Not for animal or human consumption.

Purchasers shall not, and agree not to enable third parties to, analyze, copy, reverse engineer or otherwise attempt to determine the structure or sequence of the product.



For full product information, images and publications, please visit our [website](#).

DATA IMAGES



GTX68085-pro Image

3μg Human Mortality factor 4 like 2 protein (GTX68085-pro) by SDS-PAGE under reducing condition and visualized by coomassie blue stain.



For full product information, images and publications, please visit our [website](https://www.genetex.com).