

Human WDR5 protein, His tag

Cat. No. GTX68225-pro

Species Human

Package
100 µg

Applications

Observed MW (kDa) 37 kDa.

Properties

Form Liquid

Buffer 20mM Tris-HCl, 100mM NaCl, 10% Glycerol, 2mM DTT

Preservative No preservatives

Storage Store as concentrated solution. Centrifuge briefly prior to opening vial. For short-term storage (1-2 weeks), store at 4°C. For long-term storage, aliquot and store at -20°C or below. Avoid multiple freeze-thaw cycles.

Concentration 1 mg/ml (Please refer to the vial label for the specific concentration.)

Region/Sequence

Full length protein, N-terminal His-Tag; MGSSHHHHHH SSGLVPRGSH MATEEKKPET EAARAQTPS SSATQSKPTP
 VKPNYALKFT LAGHTKAVSS VKFSPNGEWL ASSSADKLIK IWGAYDGKFE KTISGHKLG I SDVAWSSDSN LLVSASDDKT
 LKIWDVSSGK CLKTLKGHSN YVFCCNFNPQ SNLIVSGSFD ESVRIWDVKT GKCLKLPAH SDPVSAVHFN RDGSLIVSS
 YDGLCRIWDT ASGQCLKTLI DDDNPPVSFV KFSPNGKYIL AATLDNTLKL WDYSKGKCLK TYTGHKNEKY CIFANFSVTG
 GKWIVSGSED NLVYIWNLQT KEIVQKLQGH TDVVISTACH PTENIIASAA LENDKTIKLW KSDC

Expression System E. coli

Purity > 95% by SDS-PAGE.

Conjugation Unconjugated

Note

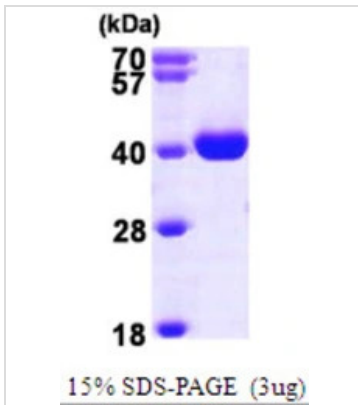
For laboratory research use only. Not for any clinical, therapeutic, or diagnostic use in humans or animals. Not for animal or human consumption.

Purchasers shall not, and agree not to enable third parties to, analyze, copy, reverse engineer or otherwise attempt to determine the structure or sequence of the product.



For full product information, images and publications, please visit our [website](#).

DATA IMAGES

**GTX68225-pro Image**

3 μ g Human WDR5 protein (GTX68225-pro) by SDS-PAGE under reducing condition and visualized by coomassie blue stain.



For full product information, images and publications, please visit our [website](#).