

# Human WDR5 protein, His tag

**Cat. No. GTX68225-pro**

<b>Species</b>	Human
----------------	-------

<b>Package</b>	100 µg
----------------	--------

**Applications**

<b>Observed MW (kDa)</b>	37 kDa.
--------------------------	---------

**Properties**

<b>Form</b>	Liquid
-------------	--------

<b>Buffer</b>	20mM Tris-HCl, 100mM NaCl, 10% Glycerol, 2mM DTT
---------------	--

<b>Preservative</b>	No preservatives
---------------------	------------------

<b>Storage</b>	Store as concentrated solution. Centrifuge briefly prior to opening vial. For short-term storage (1-2 weeks), store at 4°C. For long-term storage, aliquot and store at -20°C or below. Avoid multiple freeze-thaw cycles.
----------------	--

<b>Concentration</b>	1 mg/ml (Please refer to the vial label for the specific concentration.)
----------------------	--

<b>Region/Sequence</b>	Full length protein, N-terminal His-Tag; MGSSHHHHHH SSGLVPRGSH MATEEKKPET EAARAQTPS SSATQSKPTP VKPNYALKFT LAGHTKAVSS VKFSPNGEWL ASSSADKLIK IWGAYDGKFE KTISGHKLG I SDVAWSSDSN LLVSASDDKT LKIWDVSSGK CLKTLKGHSN YVFCCNFNPQ SNLIVSGSFD ESVRIWDVKT GKCLKLPAH SDPVSAVHFN RDGSLIVSSS YDGLCRIWDT ASGQCLKTLI DDDNPPVSFV KFSPNGKYIL AATLDNTLKL WDYSKGKCLK TYTGHKNEKY CIFANFSVTG GKWIVSGSED NLVYIWNLQT KEIVQKLQGH TDVVISTACH PTENIIASAA LENDKTIKLW KSDC
------------------------	---

<b>Expression System</b>	E. coli
--------------------------	---------

<b>Purity</b>	> 95% by SDS-PAGE.
---------------	--------------------

<b>Conjugation</b>	Unconjugated
--------------------	--------------

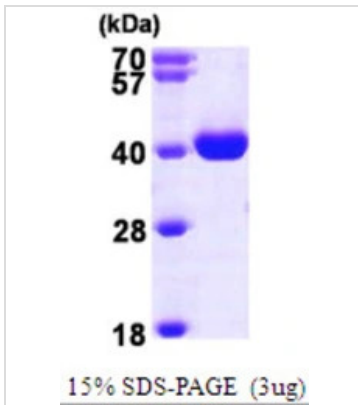
<b>Note</b>	For laboratory research use only. Not for any clinical, therapeutic, or diagnostic use in humans or animals. Not for animal or human consumption.
-------------	---

<b>Note</b>	Purchasers shall not, and agree not to enable third parties to, analyze, copy, reverse engineer or otherwise attempt to determine the structure or sequence of the product.
-------------	---



For full product information, images and publications, please visit our [website](#).

## DATA IMAGES

**GTX68225-pro Image**

3 $\mu$ g Human WDR5 protein (GTX68225-pro) by SDS-PAGE under reducing condition and visualized by coomassie blue stain.



For full product information, images and publications, please visit our [website](#).