

Human Acid Phosphatase protein, His tag

Cat. No. GTX68247-pro

| | |
|---------|-------|
| Species | Human |
|---------|-------|

| | |
|---------|--------|
| Package | 100 µg |
|---------|--------|

Applications

| | |
|-------------------|---------|
| Observed MW (kDa) | 21 kDa. |
|-------------------|---------|

Properties

| | |
|------|--------|
| Form | Liquid |
|------|--------|

| | |
|--------|---|
| Buffer | 20mM Tris-HCl, 100mM NaCl, 20% Glycerol, 0.1mM PMSF |
|--------|---|

| | |
|--------------|------------------|
| Preservative | No preservatives |
|--------------|------------------|

| | |
|---------|--|
| Storage | Store as concentrated solution. Centrifuge briefly prior to opening vial. For short-term storage (1-2 weeks), store at 4°C. For long-term storage, aliquot and store at -20°C or below. Avoid multiple freeze-thaw cycles. |
|---------|--|

| | |
|---------------|--|
| Concentration | 1 mg/ml (Please refer to the vial label for the specific concentration.) |
|---------------|--|

| | |
|-----------------|---|
| Region/Sequence | Full length protein, C-terminal His-Tag; MPKGGRKGGH KGRARQYTSP EEIDAQLQAE KQKAREEEEQ KEGGDGAAGD PKKEKKSIDS DESEDEEDDY QQKRKGVEGL IDIENPNRVA QTTKKVTQLD LDGPKELSRR EREEIEKQKA KERYMKMHLA GKTEQAKADL ARLAIIRKQR EEAARKKEEE RKAKDDATLS GKRMQSLSLN KLEHHHHHHH |
|-----------------|---|

| | |
|-------------------|---------|
| Expression System | E. coli |
|-------------------|---------|

| | |
|--------|--------------------|
| Purity | > 90% by SDS-PAGE. |
|--------|--------------------|

| | |
|-------------|--------------|
| Conjugation | Unconjugated |
|-------------|--------------|

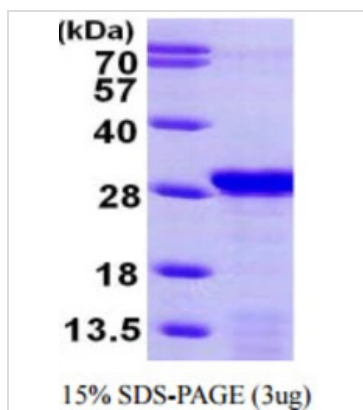
| | |
|------|---|
| Note | For laboratory research use only. Not for any clinical, therapeutic, or diagnostic use in humans or animals. Not for animal or human consumption. |
|------|---|

| | |
|------|---|
| Note | Purchasers shall not, and agree not to enable third parties to, analyze, copy, reverse engineer or otherwise attempt to determine the structure or sequence of the product. |
|------|---|



For full product information, images and publications, please visit our [website](#).

DATA IMAGES



GTx68247-pro Image

3µg Human Acid Phosphatase protein (GTx68247-pro) by SDS-PAGE under reducing condition and visualized by coomassie blue stain.



For full product information, images and publications, please visit our [website](#).