

Human GABARAP protein, His tag

Cat. No. GTX68250-pro**Species** Human**Package**
100 µg

Applications

Observed MW (kDa) 14 kDa.

Properties

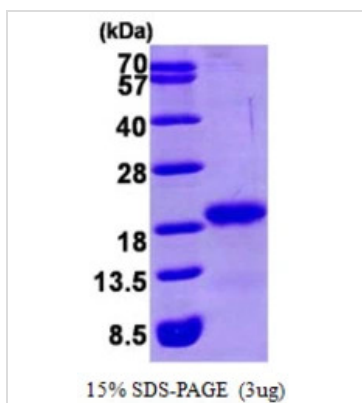
Form Liquid**Buffer** 20mM Tris-HCl, 200mM NaCl, 20% Glycerol**Preservative** No preservatives**Storage** Store as concentrated solution. Centrifuge briefly prior to opening vial. For short-term storage (1-2 weeks), store at 4°C. For long-term storage, aliquot and store at -20°C or below. Avoid multiple freeze-thaw cycles.**Concentration** 1 mg/ml (Please refer to the vial label for the specific concentration.)**Region/Sequence** Full length protein, N-terminal His-Tag; MGSSHHHHHH SGLVPRGSH MKFVYKEEHP FEKRRSEGEK IRKKYPDRVP VIVEKAPKAR IGDLDKKKYL VPSDLTVGQF YFLIRKRIHL RAEDALFFV NNVIPPTSAT MGQLYQEHHE EDFFLYIAYS DESVGL**Expression System** E. coli**Purity** > 95% by SDS-PAGE.**Conjugation** Unconjugated

For laboratory research use only. Not for any clinical, therapeutic, or diagnostic use in humans or animals. Not for animal or human consumption.

Note

Purchasers shall not, and agree not to enable third parties to, analyze, copy, reverse engineer or otherwise attempt to determine the structure or sequence of the product.

DATA IMAGES

**GTX68250-pro Image**

3µg Human GABARAP protein (GTX68250-pro) by SDS-PAGE under reducing condition and visualized by coomassie blue stain.

For full product information, images and publications, please visit our [website](#).