

Human DCUN1D2 protein, His tag

Cat. No. GTX68580-pro**Species** Human**Package**

100 µg

Applications

Observed MW (kDa) 30 kDa.

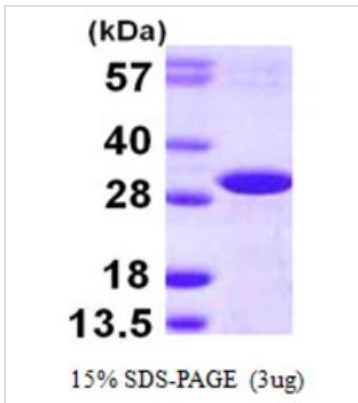
Properties

Form Liquid**Buffer** 20mM Tris-HCl, 100mM NaCl, 30% Glycerol, 1mM DTT**Preservative** No preservatives**Storage** Store as concentrated solution. Centrifuge briefly prior to opening vial. For short-term storage (1-2 weeks), store at 4°C. For long-term storage, aliquot and store at -20°C or below. Avoid multiple freeze-thaw cycles.**Concentration** 1 mg/ml (Please refer to the vial label for the specific concentration.)**Region/Sequence**
Full length protein, N-terminal His-Tag; MGSSHHHHHH SSGLVPRGSH MHKLKSSQKD KVRQFMACTQ AGERTAIYCL
TQNEWRLDEA TDSFFQNPDS LHRESMRNAV DKKKLERLYG RYKDPQDENK IGVDGIQQFC DDLSLDPASI SVLVIWKF
AATQCEFSRK EFLDGMTELG CDSMEKALKAL LPRLEQELKD TAKFKDFYQF TTFKAKNPGQ KGLDLEMAVA YWKLVLSGRF
KFLDLWNTFL MEHHKRSIPR DTWNLLDFG NMIADDMSNY DEEGAWPVI DDFVEYARPV VTGGKRS LF**Expression System** E. coli**Purity** > 95% by SDS-PAGE.**Conjugation** Unconjugated**Note** For laboratory research use only. Not for any clinical, therapeutic, or diagnostic use in humans or animals. Not for animal or human consumption.

Purchasers shall not, and agree not to enable third parties to, analyze, copy, reverse engineer or otherwise attempt to determine the structure or sequence of the product.

For full product information, images and publications, please visit our [website](#).

DATA IMAGES

**GTX68580-pro Image**

3 μ g Human DCUN1D2 protein (GTX68580-pro) by SDS-PAGE under reducing condition and visualized by coomassie blue stain.



For full product information, images and publications, please visit our [website](#).