

Human ATG3 protein, His tag

Cat. No. GTX68697-pro
Species Human

Package
100 µg

Applications
Observed MW (kDa) 36 kDa.

Properties
Form Liquid

Buffer 20mM Tris-HCl, 100mM NaCl, 10% Glycerol

Preservative No preservatives

Storage Store as concentrated solution. Centrifuge briefly prior to opening vial. For short-term storage (1-2 weeks), store at 4°C. For long-term storage, aliquot and store at -20°C or below. Avoid multiple freeze-thaw cycles.

Concentration 0.5 mg/ml (Please refer to the vial label for the specific concentration.)

Region/Sequence

Full length protein, N-terminal His-Tag; MGSSHHHHHH SSSLVPRGSH MGSMQNVINT VKGKALEVAE YLTPVLKESK FKETGVITPE EFVAAGDHLV HHCPTWQWAT GEELKVKAYL PTGKQFLVTK NVPCYKRCKQ MEYSDELEAI IEEDDGDGGW VDTYHNTGIT GITEAVKEIT LENKDNIRLQ DCSALCEEEE DEDEGEAADM EEEESGLLE TDEATLDRK IVEACKAKTD AGGEDAILQT RTYDLYITYD KYQTPRLWL FGYDEQRQPL TVEHMYEDIS QDHVKKTVTI ENHPLPPPP MCSVHPCRHA EVMKKIETV AEGGGELGVH MYLLIFLKFV QAVIPTIEYD YTRHFTM

Expression System E. coli

Purity > 85% by SDS-PAGE.

Conjugation Unconjugated

Note

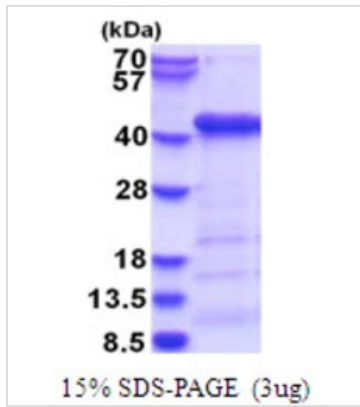
For laboratory research use only. Not for any clinical, therapeutic, or diagnostic use in humans or animals. Not for animal or human consumption.

Purchasers shall not, and agree not to enable third parties to, analyze, copy, reverse engineer or otherwise attempt to determine the structure or sequence of the product.



For full product information, images and publications, please visit our [website](#).

DATA IMAGES

**GTX68697-pro Image**

3 μ g Human ATG3 protein (GTX68697-pro) by SDS-PAGE under reducing condition and visualized by coomassie blue stain.



For full product information, images and publications, please visit our [website](#).