

Human UBA5 protein, His tag

Cat. No. GTX68748-pro

Species	Human
----------------	-------

Package	50 µg
----------------	-------

Applications

Observed MW (kDa)	45 kDa.
--------------------------	---------

Properties

Form	Liquid
-------------	--------

Buffer	20mM Tris-HCl, 50mM NaCl, 10% Glycerol, 1mM DTT
---------------	---

Preservative	No preservatives
---------------------	------------------

Storage	Store as concentrated solution. Centrifuge briefly prior to opening vial. For short-term storage (1-2 weeks), store at 4°C. For long-term storage, aliquot and store at -20°C or below. Avoid multiple freeze-thaw cycles.
----------------	--

Concentration	0.5 mg/ml (Please refer to the vial label for the specific concentration.)
----------------------	--

Region/Sequence

Full length protein, N-terminal His-Tag; MGSSHHHHHH SSGLVPRGSH MGSHEMAESVE RLQQRVQELE RELAQERSLQ VPRSGDGGGG RVRIEKMSSE WDSNPYSRL MALKRMGIVS DYKIRTFVAV AIVGVGGVGS VTAEMLTRCG IGKLLFDYD KVELANMNRL FFQPHQAGLS KVQAAEHTLR NINPDVLFV HNYNITTVEN FQHFMDRISN GGLEEGKPVD LVLSCVDNFE ARMTINTACN ELGQTWMESE VSENAVSGHI QLIIPGESAC FACAPPLVA ANIDEKTLKR EGVCAASLPT TMGWAGILV QNVLKFLNF GTVSFYLGYN AMQDFPTMS MKPNPQCDDR NCRKQEEYK KKVAALPKQE VIQEEEEIHH EDNEWGIELV SEVSEELKN FSGPVPDLPE GITVAYTIK KQEDSVTELT VEDSGESLED LMAKMKNM

Expression System	E. coli
--------------------------	---------

Purity	> 90% by SDS-PAGE.
---------------	--------------------

Conjugation	Unconjugated
--------------------	--------------

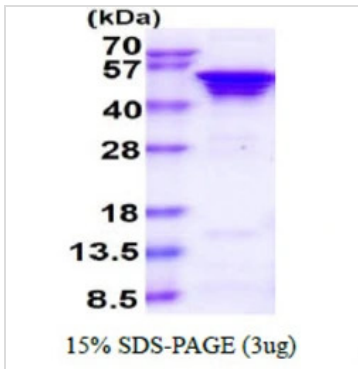
Note	For laboratory research use only. Not for any clinical, therapeutic, or diagnostic use in humans or animals. Not for animal or human consumption.
-------------	---

Note	Purchasers shall not, and agree not to enable third parties to, analyze, copy, reverse engineer or otherwise attempt to determine the structure or sequence of the product.
-------------	---



For full product information, images and publications, please visit our [website](#).

DATA IMAGES

**GTX68748-pro Image**

3 μ g Human UBA5 protein (GTX68748-pro) by SDS-PAGE under reducing condition and visualized by coomassie blue stain.



For full product information, images and publications, please visit our [website](#).