

Human PTGES2 protein, His tag

Cat. No. GTX68752-pro

Species	Human
----------------	-------

Package	100 µg
----------------	--------

Applications

Observed MW (kDa)	42 kDa.
--------------------------	---------

Properties

Form	Liquid
-------------	--------

Buffer	20mM Tris-HCl, 200mM NaCl, 20% Glycerol, 2mM DTT, 0.1mM PMSF
---------------	--

Preservative	No preservative
---------------------	-----------------

Storage	Store as concentrated solution. Centrifuge briefly prior to opening vial. For short-term storage (1-2 weeks), store at 4°C. For long-term storage, aliquot and store at -20°C or below. Avoid multiple freeze-thaw cycles.
----------------	--

Concentration	0.5 mg/ml (Please refer to the vial label for the specific concentration.)
----------------------	--

Region/Sequence	Full length protein, N-terminal His-Tag; MGSSHHHHHH SSGLVPRGSH MKAVNEQGKE VTEFGNKYWL MLNEKEAQQV YGGKEARTEE MKWRQWADDW LVHLISPNVY RTPTEALASF DYIVREGKFG AVEGAVAKYM GAAAMYLIK RLSRHLRQD NVREDLYEAA DKWVAAVGKD RPFMGGQKPN LADLAVYGV LRVMEGLDAFD DLMQHTHIQP WYLRVERAIT EASPAH
------------------------	---

Expression System	E. coli
--------------------------	---------

Purity	> 95% by SDS-PAGE.
---------------	--------------------

Conjugation	Unconjugated
--------------------	--------------

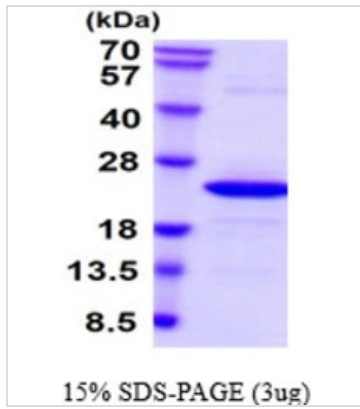
Note	For laboratory research use only. Not for any clinical, therapeutic, or diagnostic use in humans or animals. Not for animal or human consumption.
-------------	---

Note	Purchasers shall not, and agree not to enable third parties to, analyze, copy, reverse engineer or otherwise attempt to determine the structure or sequence of the product.
-------------	---



For full product information, images and publications, please visit our [website](#).

DATA IMAGES

**GTX68752-pro Image**

3 μ g Human PTGES2 protein (GTX68752-pro) by SDS-PAGE under reducing condition and visualized by coomassie blue stain.



For full product information, images and publications, please visit our [website](#).