

# Hec1 (non-phospho Ser 165) antibody

**Cat. No. GTX70012**

<b>Host</b>	Rabbit
<b>Clonality</b>	Polyclonal
<b>Isotype</b>	IgG
<b>Applications</b>	WB, ICC/IF, ELISA
<b>Reactivity</b>	Human, Mouse, Rat

**Package**  
100 µl

## Applications

### Application Note

#### Recommended Starting Dilutions:

For WB: Use at a dilution of 1:600

For ICC/IF: Use at a dilution of 1:300

Not yet tested in other applications. Optimal dilutions should be determined experimentally by the researcher.

**Calculated MW** 74 kDa. ( [Note](#) )

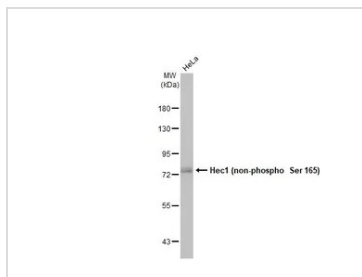
## Properties

<b>Form</b>	Liquid
<b>Buffer</b>	PBS
<b>Preservative</b>	No Preservative
<b>Storage</b>	Store as concentrated solution. Centrifuge briefly prior to opening vial. For short-term storage (1-2 weeks), store at 4°C. For long-term storage, aliquot and store at -20°C or below. Avoid multiple freeze-thaw cycles.
<b>Concentration</b>	0.91 mg/ml (Please refer to the vial label for the specific concentration.)
<b>Immunogen</b>	Synthetic peptide (GTX70012-PEP) corresponding to the amino acids around Ser 165 conjugated to KLH
<b>Purification</b>	Affinity purified using antigen
<b>Conjugation</b>	Unconjugated
<b>Note</b>	For laboratory research use only. Not for any clinical, therapeutic, or diagnostic use in humans or animals. Not for animal or human consumption.  Purchasers shall not, and agree not to enable third parties to, analyze, copy, reverse engineer or otherwise attempt to determine the structure or sequence of the product.



For full product information, images and publications, please visit our [website](#).

## DATA IMAGES



### GTx70012 WB Image

Whole cell extract (30 µg) was separated by 7.5% SDS-PAGE, and the membrane was blotted with Hec1 (non-phospho Ser 165) antibody (GTx70012) diluted at 1:1000. The HRP-conjugated anti-rabbit IgG antibody (GTx213110-01) was used to detect the primary antibody.



For full product information, images and publications, please visit our [website](https://www.genetex.com).