

Hec1 (non-phospho Ser 76/77) antibody

Cat. No. GTX70014

Host	Rabbit
Clonality	Polyclonal
Isotype	IgG
Applications	WB, ICC/IF, ELISA
Reactivity	Human

Package
100 µl

Applications

Application Note

Recommended Starting Dilutions:

For WB: Use at a dilution of 1:400

For ICC/IF: Use at a dilution of 1:200

Not yet tested in other applications. Optimal dilutions should be determined experimentally by the researcher.

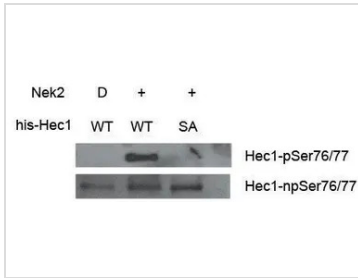
Calculated MW 74 kDa. ([Note](#))

Properties

Form	Liquid
Buffer	PBS
Preservative	No preservatives
Storage	Store as concentrated solution. Centrifuge briefly prior to opening vial. For short-term storage (1-2 weeks), store at 4°C. For long-term storage, aliquot and store at -20°C or below. Avoid multiple freeze-thaw cycles.
Concentration	0.82 mg/ml (Please refer to the vial label for the specific concentration.)
Immunogen	Synthetic peptide (GTX70014-PEP) corresponding to the amino acids around Ser 76/77 conjugated to KLH
Purification	Affinity purified using antigen
Conjugation	Unconjugated
Note	For laboratory research use only. Not for any clinical, therapeutic, or diagnostic use in humans or animals. Not for animal or human consumption. Purchasers shall not, and agree not to enable third parties to, analyze, copy, reverse engineer or otherwise attempt to determine the structure or sequence of the product.



For full product information, images and publications, please visit our [website](#).

DATA IMAGES

GTx70014 WB Image

Western Blot analysis of phospho and non-phospho Ser76/Ser77



For full product information, images and publications, please visit our [website](#).