

Hec1 (phospho Ser 76/77) antibody

Cat. No. GTX70015

Host	Rabbit
Clonality	Polyclonal
Isotype	IgG
Applications	WB, ICC/IF, ELISA
Reactivity	Human

Package
100 µl

Applications

Application Note**Recommended Starting Dilutions:**

For WB: Use at a dilution of 1:300

For ICC/IF: Use at a dilution of 1:150

Not yet tested in other applications. Optimal dilutions should be determined experimentally by the researcher.

Calculated MW 74 kDa. ([Note](#))

Properties

Form	Liquid
Buffer	PBS
Preservative	No preservatives
Storage	Store as concentrated solution. Centrifuge briefly prior to opening vial. For short-term storage (1-2 weeks), store at 4°C. For long-term storage, aliquot and store at -20°C or below. Avoid multiple freeze-thaw cycles.
Concentration	0.08 mg/ml (Please refer to the vial label for the specific concentration.)
Immunogen	Carrier-protein conjugated synthetic peptide encompassing a sequence within the C-terminus region of human Hec1 (phospho Ser 76/77). The exact sequence is proprietary.
Purification	Affinity purified using antigen
Conjugation	Unconjugated

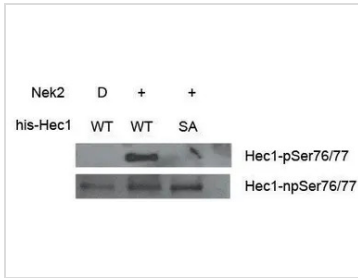
Note

For laboratory research use only. Not for any clinical, therapeutic, or diagnostic use in humans or animals. Not for animal or human consumption.

Purchasers shall not, and agree not to enable third parties to, analyze, copy, reverse engineer or otherwise attempt to determine the structure or sequence of the product.

For full product information, images and publications, please visit our [website](#).

DATA IMAGES

**GTX70015 WB Image**

Western Blot analysis of phospho and non-phospho Ser76/Ser77



For full product information, images and publications, please visit our [website](#).