

# Hec1 antibody

**Cat. No. GTX70016**

<b>Host</b>	Rabbit
<b>Clonality</b>	Polyclonal
<b>Isotype</b>	IgG
<b>Applications</b>	WB, ICC/IF, IP, ELISA
<b>Reactivity</b>	Human, Mouse, Rat

**Package**  
100 µg

## Applications

### Application Note

#### Recommended Starting Dilutions:

For WB: Use at a dilution of 1:750

For IP: Use at a dilution of 2-4 µg/mL for 1 mg cell extract

For ICC/IF: Use at a dilution of 1:300

Not yet tested in other applications. Optimal dilutions should be determined experimentally by the researcher.

**Calculated MW** 74 kDa. ( [Note](#) )

## Properties

<b>Form</b>	Liquid
<b>Buffer</b>	PBS
<b>Preservative</b>	No preservatives
<b>Storage</b>	Store as concentrated solution. Centrifuge briefly prior to opening vial. For short-term storage (1-2 weeks), store at 4°C. For long-term storage, aliquot and store at -20°C or below. Avoid multiple freeze-thaw cycles.
<b>Concentration</b>	0.5 mg/ml (Please refer to the vial label for the specific concentration.)
<b>Immunogen</b>	A Synthetic peptide within a.a. 30~80 around Ser55
<b>Purification</b>	Affinity purified using antigen
<b>Conjugation</b>	Unconjugated

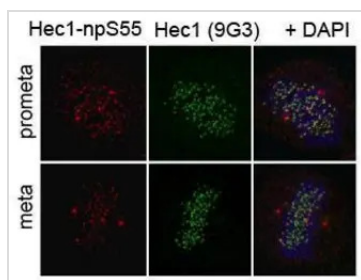
### Note

For laboratory research use only. Not for any clinical, therapeutic, or diagnostic use in humans or animals. Not for animal or human consumption.

Purchasers shall not, and agree not to enable third parties to, analyze, copy, reverse engineer or otherwise attempt to determine the structure or sequence of the product.



For full product information, images and publications, please visit our [website](#).

**DATA IMAGES**

**GTx70016 ICC/IF Image**

Immunofluorescent staining of Hec1 non-phospho Ser55 in cells undergoing prometaphase (top) or metaphase (bottom)



For full product information, images and publications, please visit our [website](#).