

Hec1 (phospho Ser 55) antibody

Cat. No. GTX70017

Host	Rabbit
Clonality	Polyclonal
Isotype	IgG
Applications	WB
Reactivity	Human, Mouse

References (21)

Package

100 µl

Applications

Application Note

*Optimal dilutions/concentrations should be determined by the researcher.

Suggested dilution	Recommended dilution
WB	1:500-1:3000

Not tested in other applications.

Calculated MW 80 kDa. ([Note](#))

Product Note KO/KD validation is based on published data (PMID: 31122175).

Properties

Form	Liquid
Buffer	PBS, 1% BSA, 20% Glycerol
Preservative	0.025% ProClin 300
Storage	Store as concentrated solution. Centrifuge briefly prior to opening vial. For short-term storage (1-2 weeks), store at 4°C. For long-term storage, aliquot and store at -20°C or below. Avoid multiple freeze-thaw cycles.
Concentration	0.26 mg/ml (Please refer to the vial label for the specific concentration.)
Immunogen	Carrier-protein conjugated synthetic peptide surrounding phospho Ser55 of human Hec1. The exact sequence is proprietary.
Purification	Purified by antigen-affinity chromatography.
Conjugation	Unconjugated

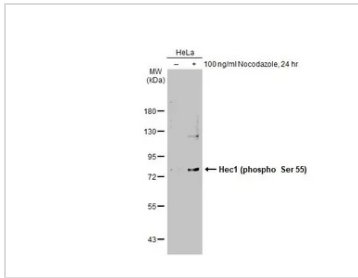
Note

For laboratory research use only. Not for any clinical, therapeutic, or diagnostic use in humans or animals. Not for animal or human consumption.

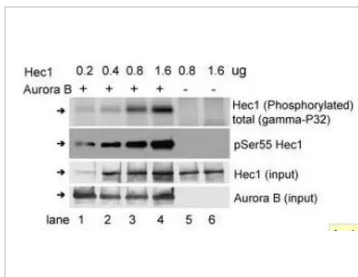
Purchasers shall not, and agree not to enable third parties to, analyze, copy, reverse engineer or otherwise attempt to determine the structure or sequence of the product.



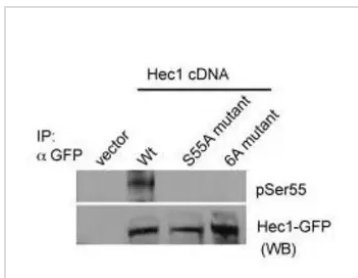
For full product information, images and publications, please visit our [website](#).

DATA IMAGES

GTx70017 WB Image

Untreated (–) and treated (+) HeLa whole cell extracts (30 µg) were separated by 7.5% SDS-PAGE, and the membrane was blotted with Hec1 (phospho Ser 55) antibody (GTx70017) diluted at 1:500. The HRP-conjugated anti-rabbit IgG antibody (GTx213110-01) was used to detect the primary antibody.


GTx70017 WB Image

Purified 6his-Hec1 was subject to a kinase assay with recombinant Aurora B and gamma-p32-labelled ATP. The resultant phospho-Hec1 were detected by measuring radioactive signal and by WB analysis with pSer55 antibody


GTx70017 WB Image

GFP-tagged Hec1 wild type, S55A or 6A (Ser55 and five other Ser/Thr residues changed to Ala) mutant was ectopically expressed in HeLa cells and the cell lysate was used for WB analysis with the Hec1 pSer55 antibody (diluted at 1:500)



For full product information, images and publications, please visit our [website](http://www.genetex.com).