

Hec1 (phospho Ser 55) antibody

Cat. No. GTX70017

Host	Rabbit
Clonality	Polyclonal
Isotype	IgG
Applications	WB
Reactivity	Human, Mouse

References (20)

Package

100 µl

Applications

Application Note

*Optimal dilutions/concentrations should be determined by the researcher.

Suggested dilution	Recommended dilution
WB	1:500-1:3000

Not tested in other applications.

Calculated MW 80 kDa. ([Note](#))

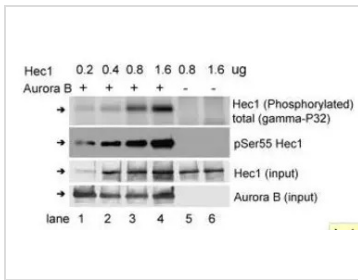
Product Note KO/KD validation is based on published data (PMID: 31122175).

Properties

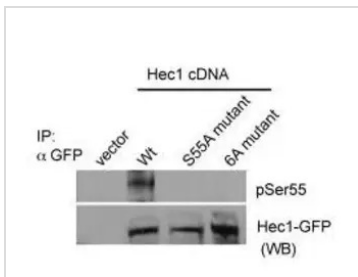
Form	Liquid
Buffer	PBS, 1% BSA, 20% Glycerol
Preservative	0.025% ProClin 300
Storage	Store as concentrated solution. Centrifuge briefly prior to opening vial. For short-term storage (1-2 weeks), store at 4°C. For long-term storage, aliquot and store at -20°C or below. Avoid multiple freeze-thaw cycles.
Concentration	0.26 mg/ml (Please refer to the vial label for the specific concentration.)
Immunogen	Carrier-protein conjugated synthetic peptide surrounding phospho Ser55 of human Hec1. The exact sequence is proprietary.
Purification	Purified by antigen-affinity chromatography.
Conjugation	Unconjugated
Note	<p>For laboratory research use only. Not for any clinical, therapeutic, or diagnostic use in humans or animals. Not for animal or human consumption.</p> <p>Purchasers shall not, and agree not to enable third parties to, analyze, copy, reverse engineer or otherwise attempt to determine the structure or sequence of the product.</p>



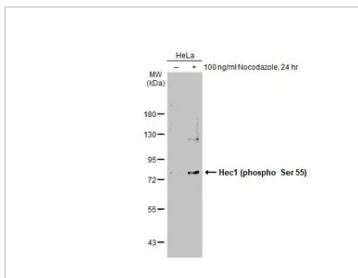
For full product information, images and publications, please visit our [website](#).

DATA IMAGES

GTx70017 WB Image

Purified 6his-Hec1 was subject to a kinase assay with recombinant Aurora B and gamma-p32-labelled ATP. The resultant phospho-Hec1 were detected by measuring radioactive signal and by WB analysis with pSer55 antibody


GTx70017 WB Image

GFP-tagged Hec1 wild type, S55A or 6A (Ser55 and five other Ser/Thr residues changed to Ala) mutant was ectopically expressed in HeLa cells and the cell lysate was used for WB analysis with the Hec1 pSer55 antibody (diluted at 1:500)


GTx70017 WB Image

Untreated (-) and treated (+) HeLa whole cell extracts (30 µg) were separated by 7.5% SDS-PAGE, and the membrane was blotted with Hec1 (phospho Ser 55) antibody (GTx70017) diluted at 1:500. The HRP-conjugated anti-rabbit IgG antibody (GTx213110-01) was used to detect the primary antibody.



For full product information, images and publications, please visit our [website](http://www.genetex.com).