

## SSEA-5 antibody [8e11]

**Cat. No. GTX70019**

<b>Host</b>	Mouse
<b>Clonality</b>	Monoclonal
<b>Isotype</b>	IgG
<b>Applications</b>	ICC/IF, FCM, IHC
<b>Reactivity</b>	Human

References ( 3 )

Package

100 µl

## Applications

**Application Note**

\*Optimal dilutions/concentrations should be determined by the researcher.

Suggested dilution	Recommended dilution
ICC/IF	1:50-1:1000
FCM	1:50
IHC	Assay dependent

Not tested in other applications.

## Properties

<b>Form</b>	Liquid
<b>Buffer</b>	PBS
<b>Preservative</b>	No preservatives
<b>Storage</b>	Store as concentrated solution. Centrifuge briefly prior to opening vial. For short-term storage (1-2 weeks), store at 4°C. For long-term storage, aliquot and store at -20°C or below. Avoid multiple freeze-thaw cycles.
<b>Concentration</b>	1 mg/ml (Please refer to the vial label for the specific concentration.)
<b>Immunogen</b>	Undifferentiated human embryonic stem cells
<b>Purification</b>	Protein G affinity purified
<b>Conjugation</b>	Unconjugated

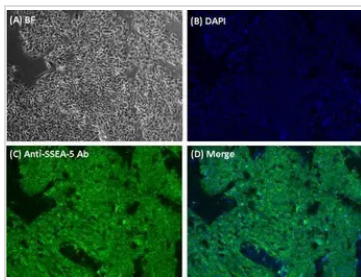
**Note**

For laboratory research use only. Not for any clinical, therapeutic, or diagnostic use in humans or animals. Not for animal or human consumption.

Purchasers shall not, and agree not to enable third parties to, analyze, copy, reverse engineer or otherwise attempt to determine the structure or sequence of the product.

For full product information, images and publications, please visit our [website](#).

## DATA IMAGES

**GTXT70019 ICC/IF Image**

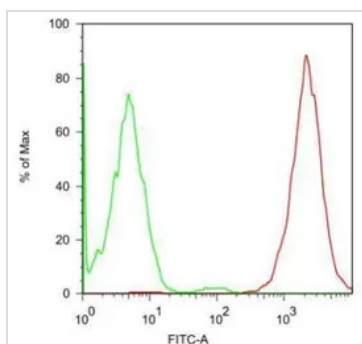
Immunofluorescent analysis of 4% FA fixed human embryonic stem cells H9 using anti-SSEA-5 Ab (1:50 dilution).

(A) Brightfield image

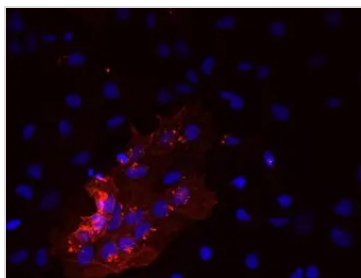
(B) Dapi

(C) anti-SSEA-5 Ab

(D) Merged image of anti-SSEA-5 Ab and DAPI

**GTXT70019 FCM Image**

Pluripotent stem cell population indicated by SSEA5-staining. Human embryonic stem cells H9 were analyzed with SSEA-5 mAB (pseudo-colored in red) and control IgG (pseudo-colored in green) in flow cytometry. Each Ab was used at a 1:50 dilution in PBS.

**GTXT70019 ICC/IF Image**

Immunofluorescent analysis of 4% PFA fixed human embryonal carcinoma cell line Tera using anti-SSEA-5 Ab (1:1000 dilution). SSEA-5 positive cells (red) represented pluripotent population; negative cells represented differentiated population. DAPI (Blue) indicated nuclear staining.



For full product information, images and publications, please visit our [website](#).