

ATM antibody [3E8]

Cat. No. GTX70105

Host	Mouse
Clonality	Monoclonal
Isotype	IgG1
Applications	WB, IHC-P, IP
Reactivity	Human, Mouse, Rat, Monkey

References (5)

Package

100 µl

Applications

Application Note

*Optimal dilutions/concentrations should be determined by the researcher.

Suggested dilution	Recommended dilution
WB	1-2 µg/ml
IHC-P	Assay dependent
IP	2-10 µg/ml

Not tested in other applications.

Calculated MW 351 kDa. ([Note](#))

Properties

Form	Liquid
Buffer	PBS, 20% Glycerol
Preservative	No preservatives
Storage	Store as concentrated solution. Centrifuge briefly prior to opening vial. For short-term storage (1-2 weeks), store at 4°C. For long-term storage, aliquot and store at -20°C or below. Avoid multiple freeze-thaw cycles.
Concentration	1 mg/ml (Please refer to the vial label for the specific concentration.)
Immunogen	Recombinant protein expressed in E. coli corresponding to amino acids 980-1512.
Purification	Protein G purified
Conjugation	Unconjugated

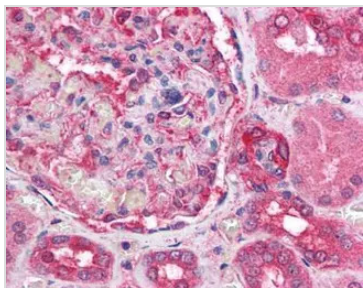
Note

For laboratory research use only. Not for any clinical, therapeutic, or diagnostic use in humans or animals. Not for animal or human consumption.

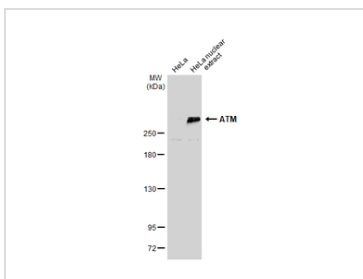
Purchasers shall not, and agree not to enable third parties to, analyze, copy, reverse engineer or otherwise attempt to determine the structure or sequence of the product.

For full product information, images and publications, please visit our [website](#).

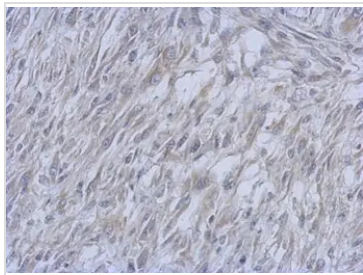
DATA IMAGES

**GTx70105 IHC-P Image**

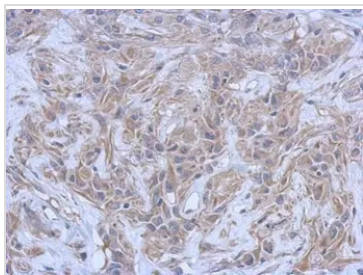
Human Kidney (formalin-fixed, paraffin-embedded) stained with ATM antibody at 5 µg/ml followed by biotinylated anti-mouse IgG secondary antibody, alkaline phosphatase-streptavidin and chromogen.

**GTx70105 WB Image**

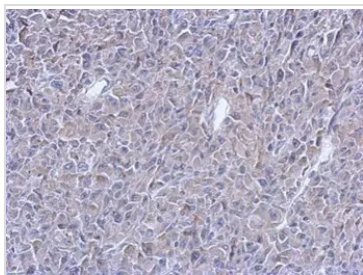
HeLa whole cell and nuclear extracts (30 µg) were separated by 5% SDS-PAGE, and the membrane was blotted with ATM antibody [3E8] (GTx70105) diluted at 1:500. The HRP-conjugated anti-mouse IgG antibody (GTx213111-01) was used to detect the primary antibody, and the signal was developed with Trident femto Western HRP Substrate.

**GTx70105 IHC-P Image**

Immunohistochemical analysis of paraffin-embedded C2C12 xenograft, using ATM(GTx70105) antibody at 1:200 dilution.

**GTx70105 IHC-P Image**

Immunohistochemical analysis of paraffin-embedded U373 xenograft, using ATM(GTx70105) antibody at 1:200 dilution.

**GTx70105 IHC-P Image**

Immunohistochemical analysis of paraffin-embedded RT2 xenograft, using ATM(GTx70105) antibody at 1:200 dilution.



For full product information, images and publications, please visit our [website](http://www.genetex.com).