

ATM antibody [5C2]

Cat. No. GTX70107

Host	Mouse
Clonality	Monoclonal
Isotype	IgG1
Applications	WB, ICC/IF, IP, IHC
Reactivity	Human, Mouse, Rat, Monkey

References (25)

Package

100 µl

Applications

Application Note

*Optimal dilutions/concentrations should be determined by the researcher.

Suggested dilution	Recommended dilution
WB	1:500-1:3000
ICC/IF	1:100-1:1000
IP	Assay dependent
IHC	Assay dependent

Not tested in other applications.

Calculated MW 351 kDa. ([Note](#))**Product Note** KO/KD validation is based on published data (PMID: 20663147).

Properties

Form	Liquid
Buffer	PBS
Preservative	No preservatives
Storage	Store as concentrated solution. Centrifuge briefly prior to opening vial. For short-term storage (1-2 weeks), store at 4°C. For long-term storage, aliquot and store at -20°C or below. Avoid multiple freeze-thaw cycles.
Concentration	1 mg/ml (Please refer to the vial label for the specific concentration.)
Immunogen	Recombinant protein expressed in E. coli corresponding to amino acids 980-1512.
Purification	Protein G purified
Conjugation	Unconjugated

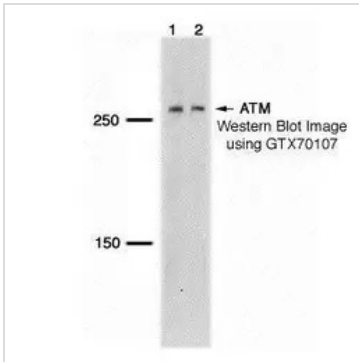


For full product information, images and publications, please visit our [website](#).

For laboratory research use only. Not for any clinical, therapeutic, or diagnostic use in humans or animals. Not for animal or human consumption.

Note
Purchasers shall not, and agree not to enable third parties to, analyze, copy, reverse engineer or otherwise attempt to determine the structure or sequence of the product.

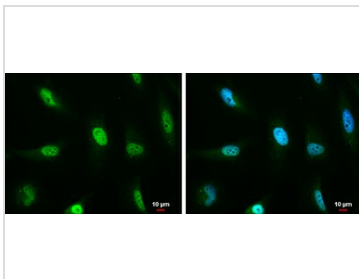
DATA IMAGES



GTX70107 WB Image

Detection of human ATM protein using GeneTex ATM 5C2 monoclonal antibody (GTX70107) in Raji whole cell extract (lane 1) and T24 synchronized cell lysate (lane 2). Also available 200ug size GTX70108.

The HRP-conjugated anti-mouse IgG antibody (GTX213111-01) was used to detect the primary antibody.



GTX70107 ICC/IF Image

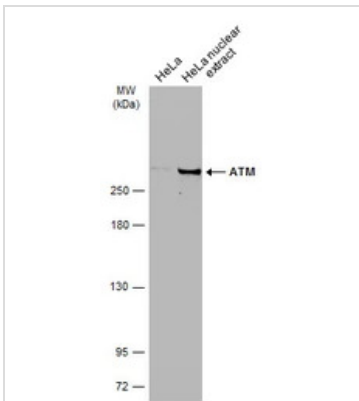
ATM antibody [5C2] detects ATM protein at nucleus by immunofluorescent analysis.

Sample: HeLa cells were fixed in 4% paraformaldehyde at RT for 15 min.

Green: ATM protein stained by ATM antibody [5C2] (GTX70107) diluted at 1:200.

Blue: Hoechst 33342 staining.

Scale bar = 10 μ m.



GTX70107 WB Image

HeLa whole cell and nuclear extracts (30 μ g) were separated by 5% SDS-PAGE, and the membrane was blotted with ATM antibody [5C2] (GTX70107) diluted at 1:1000. The HRP-conjugated anti-mouse IgG antibody (GTX213111-01) was used to detect the primary antibody, and the signal was developed with Trident ECL plus-Enhanced.



For full product information, images and publications, please visit our [website](#).