

## BRCA1 antibody [17F8] - ChIP grade

Cat. No. GTX70111

<b>Host</b>	Mouse
<b>Clonality</b>	Monoclonal
<b>Isotype</b>	IgG1
<b>Applications</b>	WB, ICC/IF, IHC-P, IP, ELISA, ChIP assay, IHC
<b>Reactivity</b>	Human, Mouse

References ( 27 )

Package

100 µl

## Applications

## Application Note

\*Optimal dilutions/concentrations should be determined by the researcher.

Suggested dilution	Recommended dilution
WB	1:500-1:3000
ICC/IF	1 µg/ml
IHC-P	Assay dependent
IP	Assay dependent
ELISA	Assay dependent
ChIP assay	Assay dependent
IHC	Assay dependent

Not tested in other applications.

**Calculated MW** 208 kDa. ( [Note](#) )

## Product Note

This antibody does not recognize the delta exon 11 splice variant of BRCA1. In a high proportion of breast and ovarian cancer cell lines, BRCA1 aberrantly mislocates to the cytoplasm.

## Properties

<b>Form</b>	Liquid
<b>Buffer</b>	PBS
<b>Preservative</b>	No preservatives
<b>Storage</b>	Store as concentrated solution. Centrifuge briefly prior to opening vial. For short-term storage (1-2 weeks), store at 4°C. For long-term storage, aliquot and store at -20°C or below. Avoid multiple freeze-thaw cycles.
<b>Concentration</b>	1.55 mg/ml (Please refer to the vial label for the specific concentration.)
<b>Immunogen</b>	Protein fragment expressed in E. coli corresponding to amino acids 762-1315.
<b>Purification</b>	Protein G purified

For full product information, images and publications, please visit our [website](#).

## Conjugation

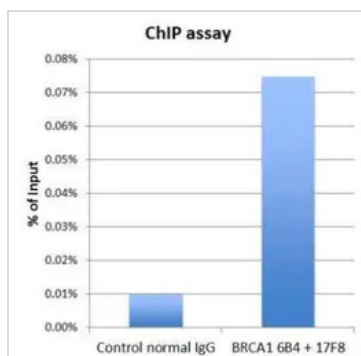
Unconjugated

## Note

For laboratory research use only. Not for any clinical, therapeutic, or diagnostic use in humans or animals. Not for animal or human consumption.

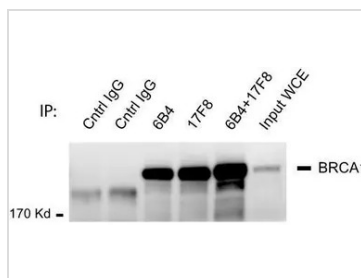
Purchasers shall not, and agree not to enable third parties to, analyze, copy, reverse engineer or otherwise attempt to determine the structure or sequence of the product.

## DATA IMAGES



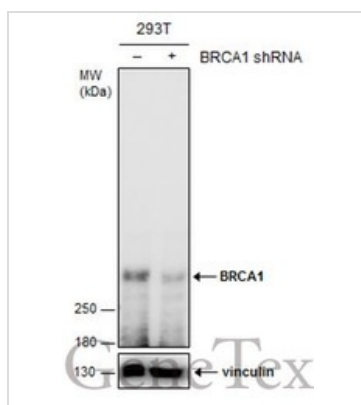
### GTX70111 ChIP assay Image

BRCA1 antibody 6B4 (GTX70115) and BRCA1 antibody 17F8 (GTX70111) were used for ChIP assay. The 6B4 and 17F8 mixture (3 microgram each), or normal mouse IgG (6 microgram) were incubated with HeLa chromatin extract (100 umicrogram each) in the ChIP assay. Enrichment of genomic DNA on a BRCA1 target gene promoter (HMGA2) was validated by a Q-PCR assay.



### GTX70111 IP Image

BRCA1 antibody 6B4 (GTX70115) and BRCA1 antibody 17F8 (GTX70111) was used for IP-WB assay. 6B4 alone (4 microgram), 17F8 alone (4 microgram), 6B4 plus 17F8 (2 microgram each), and mouse control normal IgG were used in an immunoprecipitation assay with MCF7 cell extract. Immunoprecipitated BRCA1 was detected in WB using BRCA1 antibody 6B4 at 1:1000 dilution.



### GTX70111 WB Image

Non-transfected (–) and transfected (+) 293T whole cell extracts (60 µg) were separated by 5% SDS-PAGE, and the membrane was blotted with BRCA1 antibody [17F8] - ChIP grade (GTX70111) diluted at 1:500. The HRP-conjugated anti-mouse IgG antibody (GTX213111-01) was used to detect the primary antibody.



For full product information, images and publications, please visit our [website](https://www.genetex.com).