

BRCA1 antibody [8F7]

Cat. No. GTX70113

Host	Mouse
Clonality	Monoclonal
Isotype	IgG1
Applications	WB, IHC-P, IP, IHC
Reactivity	Human, Mouse

References (15)

Package

100 µl

Applications

Application Note

For IHC-P: Use at an assay dependent dilution. Perform heat mediated antigen retrieval before commencing with IHC staining protocol (0.1 M citrate buffer at 95C in water bath for 20 min). Avoid nonspecific binding by incubating in normal rabbit anti-mouse serum. Incubate primary antibody overnight and use a biotin-streptavidin amplification kit. Block endogenous peroxidase with 0.3% H₂O₂ for 30 minutes. For IP: Use at an assay dependent dilution. For WB: 1:500-1:3000. This antibody recognizes full-length BRCA1, a 220-kDa nuclear phosphoprotein. Optimal dilutions/concentrations should be determined by the researcher.

Calculated MW 208 kDa. ([Note](#))

Product Note

This antibody recognizes full-length BRCA1, a 220-kDa nuclear phosphoprotein. Mutations in this tumor suppressor gene greatly increase the risk of breast cancer.
KO/KD validation is based on published data (PMID: 23805307).

Properties

Form	Liquid
Buffer	PBS
Preservative	No preservatives
Storage	Store as concentrated solution. Centrifuge briefly prior to opening vial. For short-term storage (1-2 weeks), store at 4°C. For long-term storage, aliquot and store at -20°C or below. Avoid multiple freeze-thaw cycles.
Concentration	1 mg/ml (Please refer to the vial label for the specific concentration.)
Immunogen	Protein fragment expressed in E. coli corresponding to amino acids 341-748.
Purification	Protein G purified
Conjugation	Unconjugated

Note

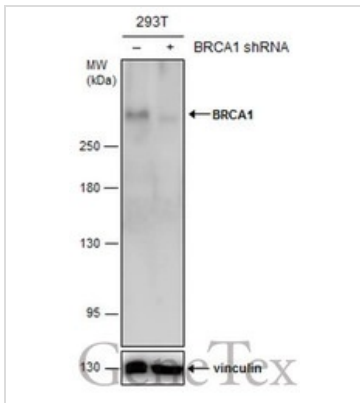
For laboratory research use only. Not for any clinical, therapeutic, or diagnostic use in humans or animals. Not for animal or human consumption.

Purchasers shall not, and agree not to enable third parties to, analyze, copy, reverse engineer or otherwise attempt to determine the structure or sequence of the product.



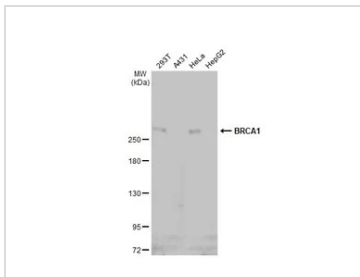
For full product information, images and publications, please visit our [website](#).

DATA IMAGES



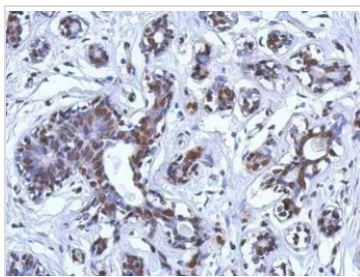
GTX70113 WB Image

Non-transfected (-) and transfected (+) 293T whole cell extracts (60 µg) were separated by 5% SDS-PAGE, and the membrane was blotted with BRCA1 antibody [8F7] (GTX70113) diluted at 1:500. The HRP-conjugated anti-mouse IgG antibody (GTX213111-01) was used to detect the primary antibody.



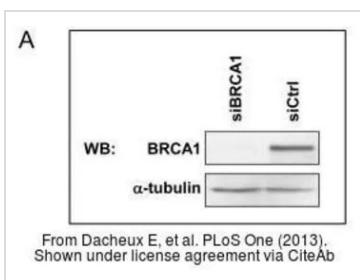
GTX70113 WB Image

Various whole cell extracts (30 µg) were separated by 5% SDS-PAGE, and the membrane was blotted with BRCA1 antibody [8F7] (GTX70113) diluted at 1:500. The HRP-conjugated anti-mouse IgG antibody (GTX213111-01) was used to detect the primary antibody, and the signal was developed with Trident ECL plus-Enhanced.



GTX70113 IHC-P Image

Immunohistochemical analysis of paraffin-embedded Breast ca, using BRCA1(GTX70113) antibody at 1:200 dilution.



GTX70113 WB Image

The data was published in the journal PLoS One in 2013. [PMID: 23805307](https://pubmed.ncbi.nlm.nih.gov/23805307/)



For full product information, images and publications, please visit our [website](https://www.genetex.com).