

## BRCA1 antibody [6B4] - ChIP grade

Cat. No. GTX70115

Host	Mouse
Clonality	Monoclonal
Isotype	IgG1
Applications	WB, ICC/IF, IHC-P, IP, ChIP assay, IHC
Reactivity	Human

References ( 3 )

Package

100 µl

## Applications

## Application Note

\*Optimal dilutions/concentrations should be determined by the researcher.

Suggested dilution	Recommended dilution
WB	1:500-1:3000
ICC/IF	1:100-1:1000
IHC-P	Assay dependent
IP	Assay dependent
ChIP assay	Assay dependent
IHC	Assay dependent

Not tested in other applications.

**Calculated MW** 208 kDa. ( [Note](#) )

**Product Note** This antibody recognizes BRCA1, a 220-kDa nuclear phosphoprotein, and does not recognize the exon 11 splice variant. Mutations in this tumor suppressor gene greatly increase the risk of breast cancer.

## Properties

Form	Liquid
Buffer	PBS, 20% Glycerol
Preservative	No preservatives
Storage	Store as concentrated solution. Centrifuge briefly prior to opening vial. For short-term storage (1-2 weeks), store at 4°C. For long-term storage, aliquot and store at -20°C or below. Avoid multiple freeze-thaw cycles.
Concentration	1 mg/ml (Please refer to the vial label for the specific concentration.)
Immunogen	BRCA1 protein fragment expressed in E. coli corresponding to amino acids 341-748.
Purification	Protein G purified



For full product information, images and publications, please visit our [website](#).

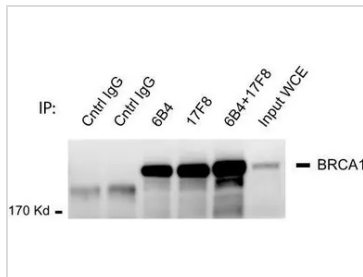
**Conjugation**

Unconjugated

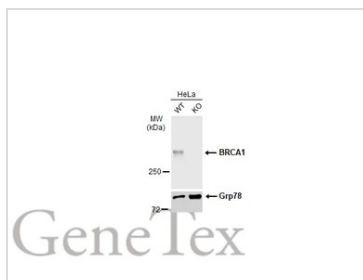
**Note**

For laboratory research use only. Not for any clinical, therapeutic, or diagnostic use in humans or animals. Not for animal or human consumption.

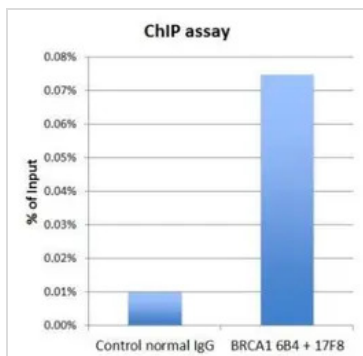
Purchasers shall not, and agree not to enable third parties to, analyze, copy, reverse engineer or otherwise attempt to determine the structure or sequence of the product.

**DATA IMAGES**

**GTx70115 IP Image**

BRCA1 antibody 6B4 (GTx70115) and BRCA1 antibody 17F8 (GTx70111) was used for IP-WB assay. 6B4 alone (4 microgram), 17F8 alone (4 microgram), 6B4 plus 17F8 (2 microgram each), and mouse control normal IgG were used in an immunoprecipitation assay with MCF7 cell extract. Immunoprecipitated BRCA1 was detected in WB using BRCA1 antibody 6B4 at 1:1000 dilution.


**GTx70115 WB Image**

Wild-type (WT) and BRCA1 knockout (KO) HeLa cell extracts (30 µg) were separated by 5% SDS-PAGE, and the membrane was blotted with BRCA1 antibody [6B4] - ChIP grade (GTx70115) diluted at 1:500. The HRP-conjugated anti-mouse IgG antibody (GTx213111-01) was used to detect the primary antibody, and the signal was developed with Trident ECL plus-Enhanced.


**GTx70115 ChIP assay Image**

BRCA1 antibody 6B4 (GTx70115) and BRCA1 antibody 17F8 (GTx70111) were used for ChIP assay. The 6B4 and 17F8 mixture (3 microgram each), or normal mouse IgG (6 microgram) were incubated with HeLa chromatin extract (100 microgram each) in the ChIP assay. Enrichment of genomic DNA on a BRCA1 target gene promoter (HMGA2) was validated by a Q-PCR assay.



For full product information, images and publications, please visit our [website](https://www.genetex.com).