

## BRCA2 antibody [5F6]

Cat. No. GTX70123

Host	Mouse
Clonality	Monoclonal
Isotype	IgG1
Applications	WB, IHC-P, IHC-Fr
Reactivity	Human

References ( 4 )

Package

100 µl

## Applications

## Application Note

Do not boil samples for longer than two minutes. For WB: Use at a concentration of 1-5 µg/ml. Predicted molecular weight: 380 kDa. Optimal dilutions/concentrations should be determined by the researcher.

Calculated MW 384 kDa. ( [Note](#) )

## Properties

Form	Liquid
Buffer	PBS
Preservative	No preservatives
Storage	Store as concentrated solution. Centrifuge briefly prior to opening vial. For short-term storage (1-2 weeks), store at 4°C. For long-term storage, aliquot and store at -20°C or below. Avoid multiple freeze-thaw cycles.
Concentration	1 mg/ml (Please refer to the vial label for the specific concentration.)
Immunogen	Amino acids 2336-2478 of human BRCA2 expressed in E. coli. BRCA2-P400.
Purification	Protein G purified
Conjugation	Unconjugated

## Note

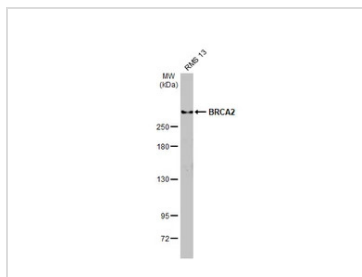
For laboratory research use only. Not for any clinical, therapeutic, or diagnostic use in humans or animals. Not for animal or human consumption.

Purchasers shall not, and agree not to enable third parties to, analyze, copy, reverse engineer or otherwise attempt to determine the structure or sequence of the product.



For full product information, images and publications, please visit our [website](#).

## DATA IMAGES



### GTX70123 WB Image

Whole cell extract (30 µg) was separated by 5% SDS-PAGE, and the membrane was blotted with BRCA2 antibody [5F6] (GTX70123) diluted at 1:1000. The HRP-conjugated anti-mouse IgG antibody (GTX213111-01) was used to detect the primary antibody, and the signal was developed with Trident ECL plus-Enhanced.



For full product information, images and publications, please visit our [website](https://www.genetex.com).