

CDC34 antibody [14B5]

Cat. No. GTX70125

Host	Mouse
Clonality	Monoclonal
Isotype	IgG1
Applications	WB, ICC/IF, IHC-P, IP
Reactivity	Human

Package
100 µl

Applications
Application Note

*Optimal dilutions/concentrations should be determined by the researcher.

Suggested dilution	Recommended dilution
WB	Assay dependent
ICC/IF	Assay dependent
IHC-P	Assay dependent
IP	Assay dependent

Not tested in other applications.

Calculated MW 27 kDa. ([Note](#))

Properties

Form	Liquid
Buffer	PBS
Preservative	No preservatives
Storage	Store as concentrated solution. Centrifuge briefly prior to opening vial. For short-term storage (1-2 weeks), store at 4°C. For long-term storage, aliquot and store at -20°C or below. Avoid multiple freeze-thaw cycles.
Concentration	1 mg/ml (Please refer to the vial label for the specific concentration.)
Immunogen	Full-length human Cdc34 expressed in E. coli.
Purification	Protein G affinity purified. From hybridoma culture supernatant.
Conjugation	Unconjugated



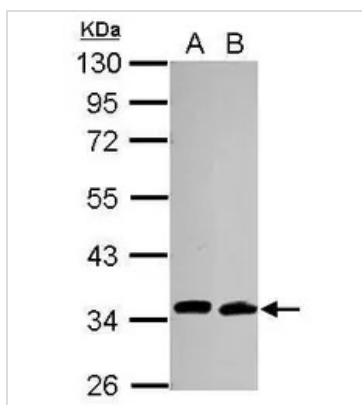
For full product information, images and publications, please visit our [website](#).

For laboratory research use only. Not for any clinical, therapeutic, or diagnostic use in humans or animals. Not for animal or human consumption.

Note

Purchasers shall not, and agree not to enable third parties to, analyze, copy, reverse engineer or otherwise attempt to determine the structure or sequence of the product.

DATA IMAGES

**GTX70125 WB Image**

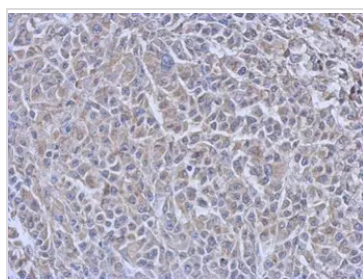
Sample (30 ug of whole cell lysate)

A: A549

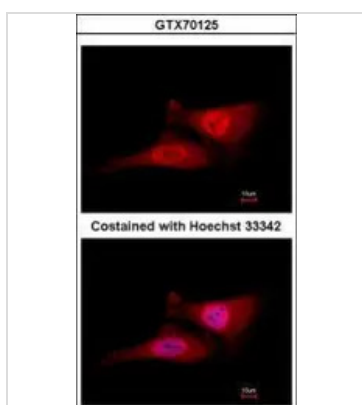
B: HCT116

10% SDS PAGE

GTX70125 diluted at 1:1000

**GTX70125 IHC-P Image**

Immunohistochemical analysis of paraffin-embedded HBL435 xenograft, using CDC34(GTX70125) antibody at 1:200 dilution.

**GTX70125 ICC/IF Image**

Immunofluorescence analysis of paraformaldehyde-fixed HeLa, using CDC34(GTX70125) antibody at 1:100 dilution.



For full product information, images and publications, please visit our [website](#).