

APE1 antibody

Cat. No. GTX70130

Host	Mouse
Clonality	Polyclonal
Isotype	IgG
Applications	WB
Reactivity	Human

Package

50 µl

Applications

Application Note

For WB: 1:500-1:3000. Predicted molecular weight: 40 kDa. Optimal dilutions/concentrations should be determined by the researcher.

Calculated MW 36 kDa. ([Note](#))

Properties

Form	Liquid
Buffer	Serum
Preservative	No preservatives
Storage	Store as concentrated solution. Centrifuge briefly prior to opening vial. For short-term storage (1-2 weeks), store at 4°C. For long-term storage, aliquot and store at -20°C or below. Avoid multiple freeze-thaw cycles.
Immunogen	Full length human APE1 purified from E. coli
Purification	Unpurified From polyclonal serum
Conjugation	Unconjugated

Note

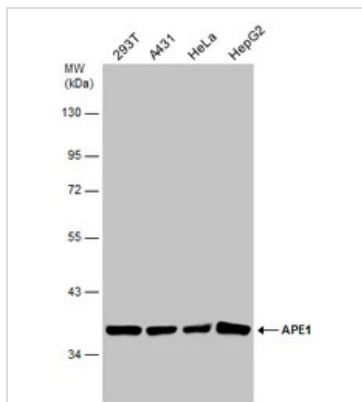
For laboratory research use only. Not for any clinical, therapeutic, or diagnostic use in humans or animals. Not for animal or human consumption.

Purchasers shall not, and agree not to enable third parties to, analyze, copy, reverse engineer or otherwise attempt to determine the structure or sequence of the product.



For full product information, images and publications, please visit our [website](#).

DATA IMAGES



GTX70130 WB Image

Various whole cell extracts (30 µg) were separated by 10% SDS-PAGE, and the membrane was blotted with APE1 antibody (GTX70130) diluted at 1:1000.



For full product information, images and publications, please visit our [website](https://www.genetex.com).