

BRCA1 antibody

Cat. No. GTX70134

Host	Mouse
Clonality	Polyclonal
Isotype	IgG
Applications	WB, IP, IHC
Reactivity	Human

References (1)

Package

50 µl

Applications

Application Note

For IP: Use at an assay dependent dilution. For WB: Use at an assay dependent dilution. Predicted molecular weight: 208 kDa. Optimal dilutions/concentrations should be determined by the researcher.

Calculated MW 208 kDa. ([Note](#))

Properties

Form	Liquid
Buffer	Serum
Preservative	No preservatives
Storage	Store as concentrated solution. Centrifuge briefly prior to opening vial. For short-term storage (1-2 weeks), store at 4°C. For long-term storage, aliquot and store at -20°C or below. Avoid multiple freeze-thaw cycles.
Immunogen	A synthetic peptide from the human BRCA1 protein corresponding to carboxyl terminal amino acids 1848-1863 (QELDTYLIPQIPHSHY).
Purification	Unpurified From polyclonal serum.
Conjugation	Unconjugated

Note

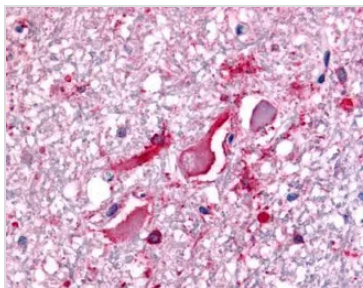
For laboratory research use only. Not for any clinical, therapeutic, or diagnostic use in humans or animals. Not for animal or human consumption.

Purchasers shall not, and agree not to enable third parties to, analyze, copy, reverse engineer or otherwise attempt to determine the structure or sequence of the product.

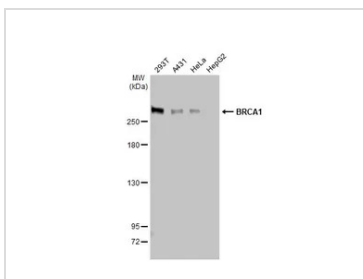


For full product information, images and publications, please visit our [website](#).

DATA IMAGES



GTX70134 IHC Image



GTX70134 WB Image

Various whole cell extracts (30 μ g) were separated by 5% SDS-PAGE, and the membrane was blotted with BRCA1 antibody (GTX70134) diluted at 1:1000. The HRP-conjugated anti-mouse IgG antibody (GTX213111-01) was used to detect the primary antibody, and the signal was developed with Trident ECL plus-Enhanced.



For full product information, images and publications, please visit our [website](https://www.genetex.com).